

FINANCIAL FACT BOOK 2015/2016

(目次 / CONTENTS)	(頁 / PAGE)
〔連結決算 / Consolidated Statements〕	(1 - 17)
経営成績 (売上高、U S \$ 建て売上高、為替レート、利益、収益性) Operating Results (Net Sales, Net Sales on U. S. Dollar-Basis, Exchange Rate, Income, and Profitability)	1 - 5
財政状態 (総資産、自己資本、有利子負債) Financial Condition (Total Assets, Stockholders' Equity, and Interest-Bearing Debt)	6 - 7
セグメント情報 (事業の種類別、所在地別、地域別売上高) Segment Information (by Business Group, by Location, and Sales by Region)	8 - 10
設備投資、減価償却費、営業キャッシュ・フロー Capital Expenditures, Depreciation & Amortization, Operating Cash Flows	11
研究開発費 Research & Development	12
連結対象会社数 Number of Consolidated Subsidiaries	12
連結貸借対照表 Consolidated Balance Sheets	13 - 14
連結損益計算書 Consolidated Income Statements	15
連結キャッシュ・フロー計算書 Consolidated Cash Flows Statements	16 - 17

FINANCIAL FACT BOOK 2015/2016

(目次 / CONTENTS)

(頁 / PAGE)

[2016年3月期予想要約 / Forecast Summary for the Period Ending March 2016]	(18 - 19)
収支状況 (連結損益計算書、連結貸借対照表) Income and Expenditures (Consolidated Income Statements and Consolidated Balance Sheets)	18
ROE・ROA (連結) ROE and ROA (Consolidated)	18
セグメント情報(分野別、所在地別) Segment Information (by Business Group, by Location)	19

[注記]

業績見通しには、現時点で入手可能な情報と当社の今後の計画等の将来予測が含まれています。国内外の経済事情、為替レート等不確実な要因の状況変化によって、実際の業績が見通しとは大きく異なる可能性があることをご承知おきください。

[Notes]:

These earnings forecasts include information that was currently available at the time and predictions of our company's future plans. Please be aware that actual results may differ greatly from these forecasts because of changes in uncertain factors such as international and domestic economic information and exchange rates.

2015年11月27日
Nov 27, 2015

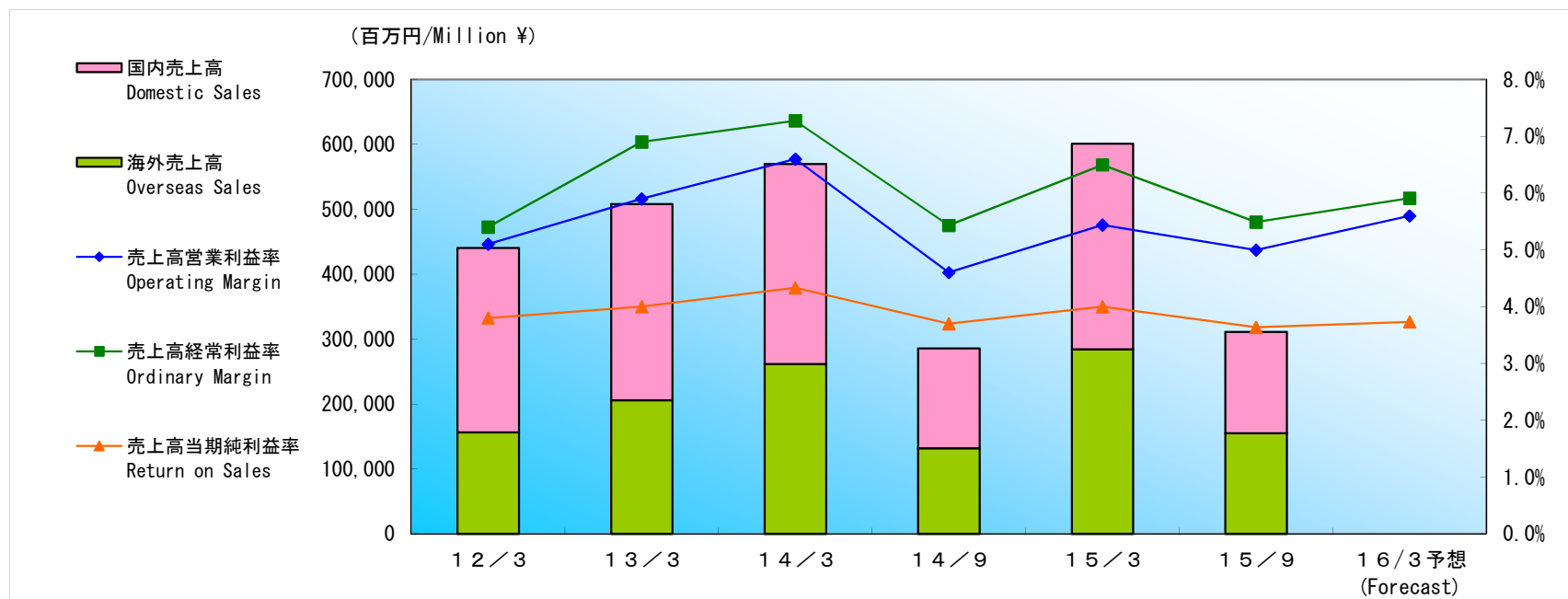
日本発条株式会社
NHK Spring Co., Ltd.

経営成績

Operating Results

(1) 売上高

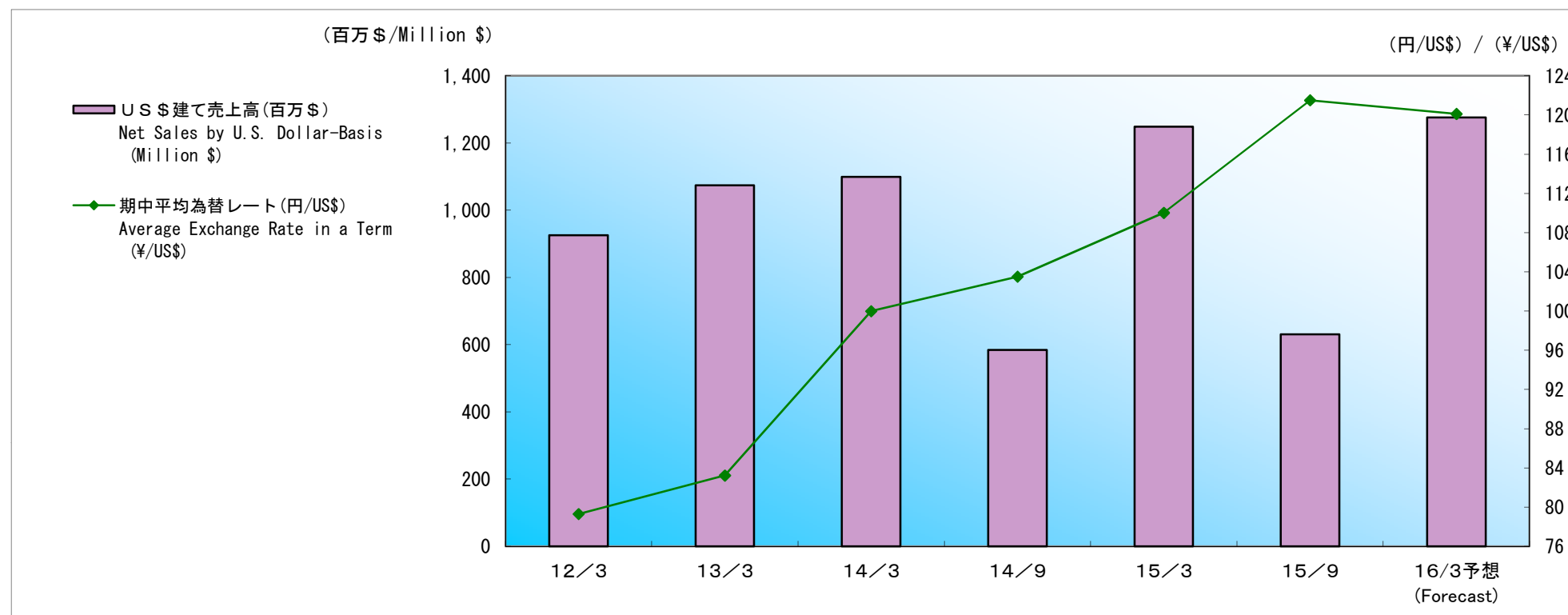
Net Sales



		百万円 / Million ¥						
		1 2 / 3	1 3 / 3	1 4 / 3	1 4 / 9	1 5 / 3	1 5 / 9	1 6 / 3 予想 (Forecast)
売上高	Net Sales	440,752	507,985	569,711	285,972	601,434	311,123	643,000
前年比	Year-over-Year	(3.4%)	15.3%	12.2%	3.9%	5.6%	8.8%	6.9%
国内売上高	Domestic Sales	284,219	302,268	307,936	154,119	316,973	155,938	-
前年比	Year-over-Year	2.7%	6.4%	1.9%	5.8%	2.9%	1.2%	-
海外売上高	Overseas Sales	156,533	205,716	261,774	131,852	284,460	155,185	-
前年比	Year-over-Year	(12.7%)	31.4%	27.3%	1.8%	8.7%	17.7%	-
売上高営業利益率	Operating Margin	5.1%	5.9%	6.6%	4.6%	5.4%	5.0%	5.6%
売上高経常利益率	Ordinary Margin	5.4%	6.9%	7.3%	5.4%	6.5%	5.5%	5.9%
売上高当期純利益率	Return on Sales	3.8%	4.0%	4.3%	3.7%	4.0%	3.6%	3.7%

(2) US\$建て売上高、為替レート

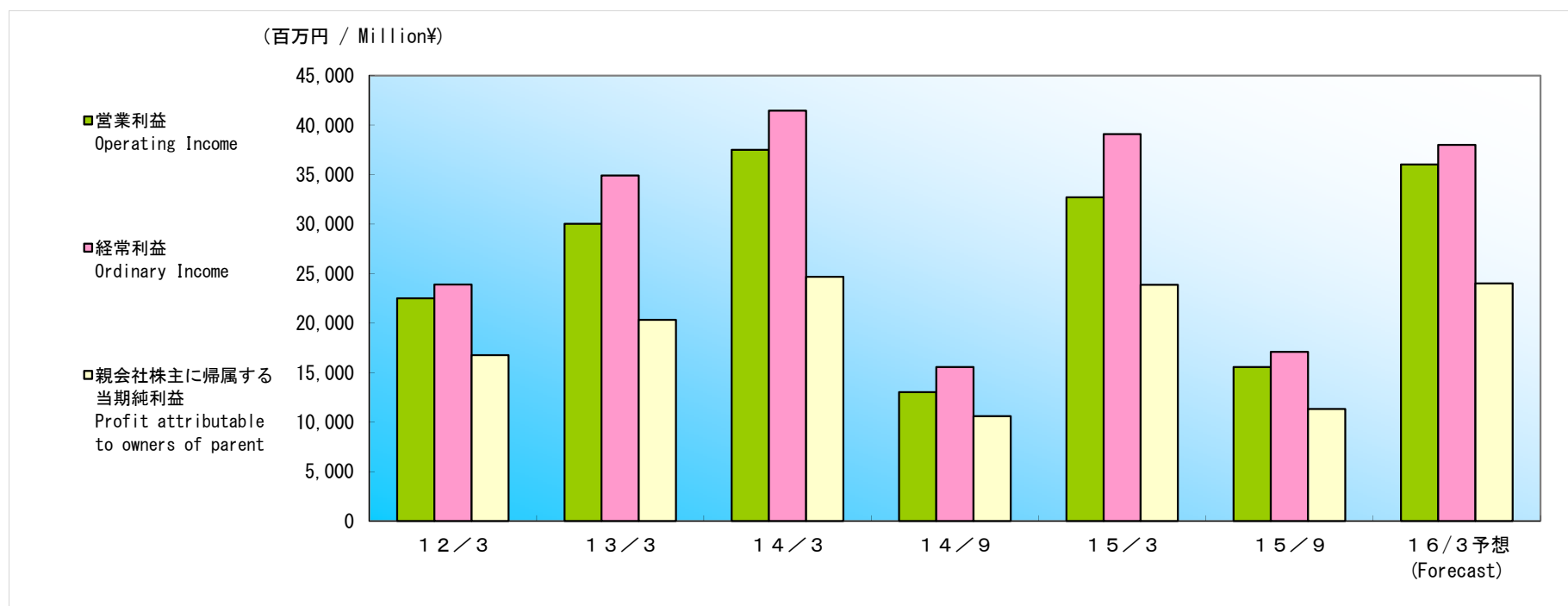
Net Sales on U.S. Dollar-Basis, Exchange rate



		12/3	13/3	14/3	14/9	15/3	15/9	16/3予想 (Forecast)
期中平均為替レート(円/US\$)	Average Exchange Rate in a Term (¥/US\$)	79	83	100	104	110	122	120
US\$建て売上高(百万\$)	Net Sales by U.S. Dollar-Basis (Million \$)	926	1,074	1,099	584	1,249	631	1,276
前年比	Year-over-Year	(1.3%)	16.0%	2.3%	6.9%	13.6%	8.1%	2.2%

(3) 利益

Income



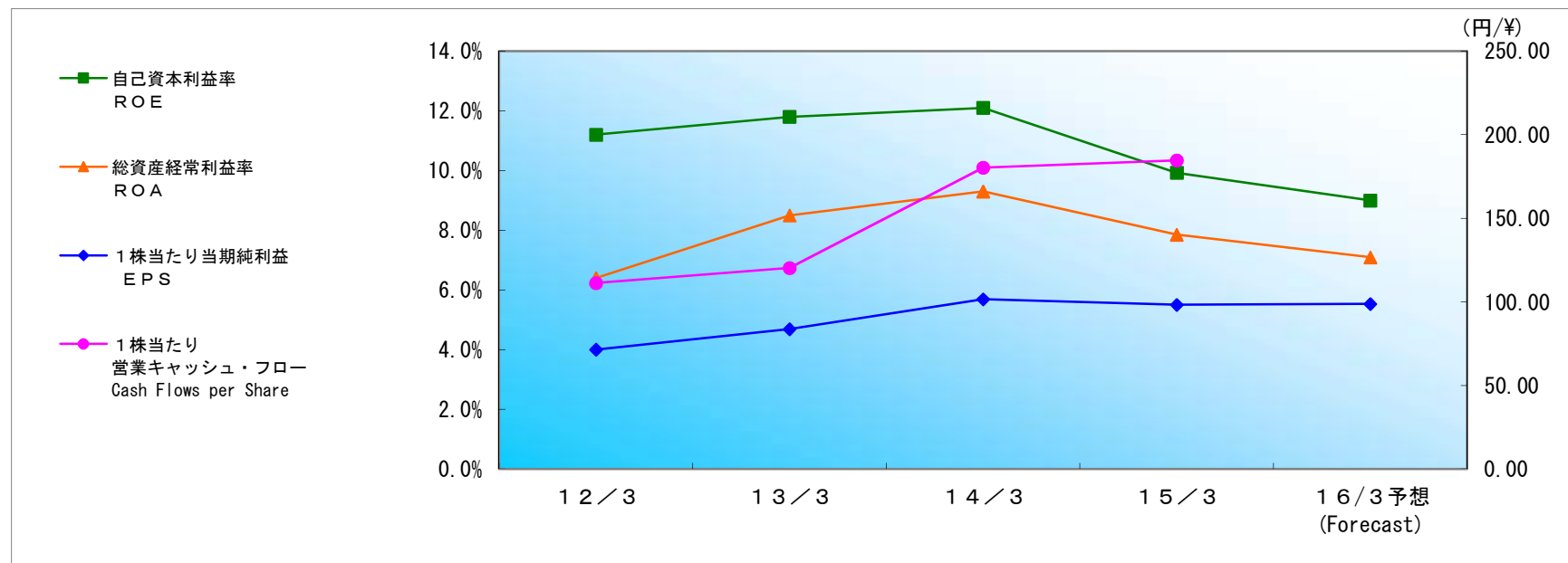
		百万円 / Million¥						
		12/3	13/3	14/3	14/9	15/3	15/9	16/3 予想 (Forecast)
営業利益	Operating Income	22,493	30,020	37,480	13,017	32,702	15,541	36,000
前年比	Year-over-Year	(31.3%)	33.5%	24.8%	(24.4%)	(12.7%)	19.4%	10.1%
経常利益	Ordinary Income	23,884	34,907	41,436	15,541	39,075	17,078	38,000
前年比	Year-over-Year	(28.5%)	46.2%	18.7%	(17.2%)	(5.7%)	9.9%	(2.8%)
親会社株主に帰属する当期純利益※	Profit Attributable to Owners of Parent※	16,741	20,333	24,677	10,589	23,873	11,309	24,000
前年比	Year-over-Year	(13.8%)	21.5%	21.4%	(15.1%)	(3.3%)	6.8%	0.5%

※2015年度より、「企業結合に関する会計基準」(企業会計基準第21号 平成25年9月13日)等を適用し、「当期純利益」を「親会社株主に帰属する当期純利益」としております。
 ※Due to the ASBJ Statement No. 21, “Revised Accounting Standard for Business Combinations”, effective from FY2015, “Net Income” will now be presented as “Profit Attributable to Owners of Parent”.

(4) 収益性

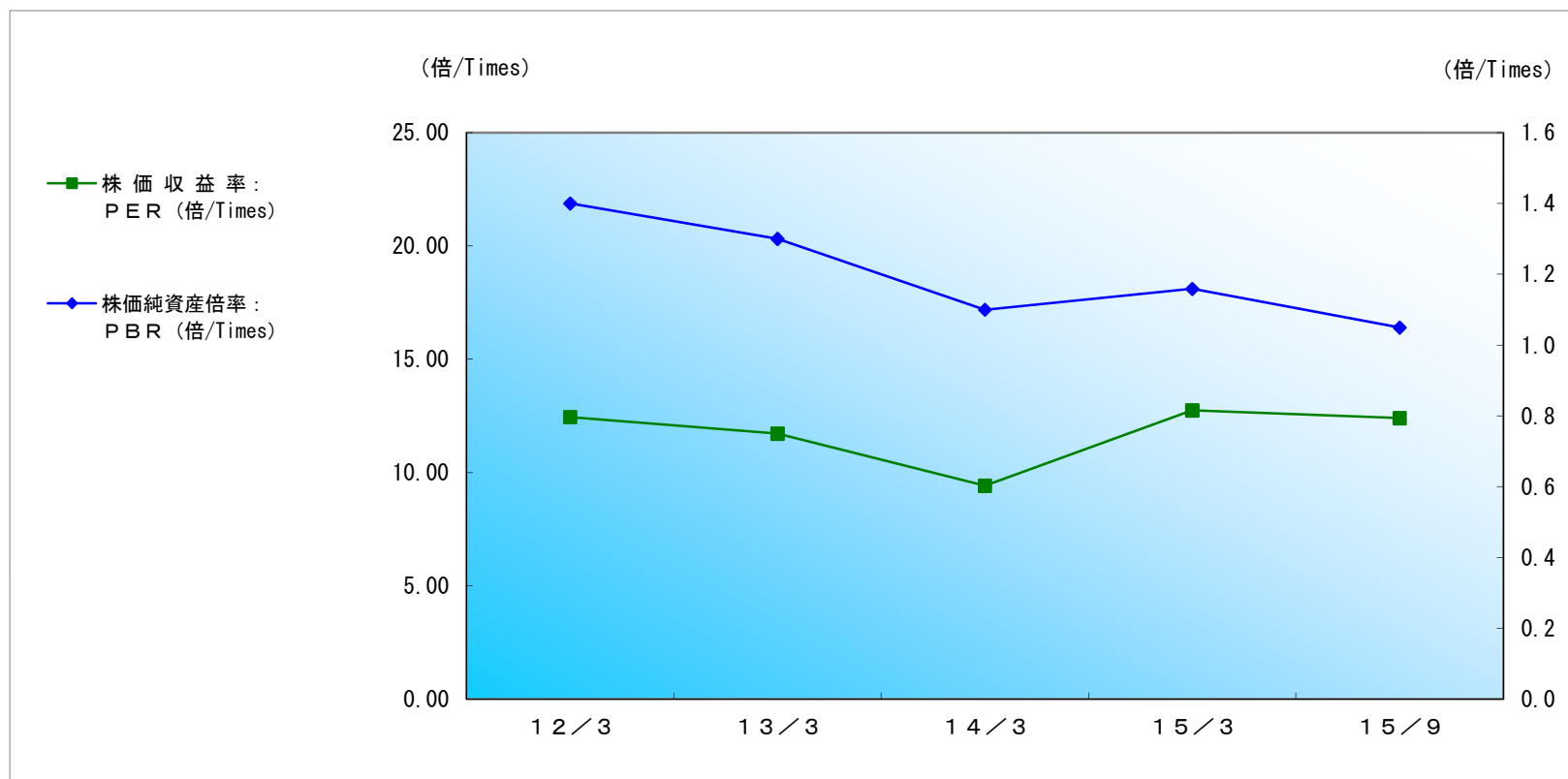
Profitability

①自己資本利益率(ROE)、総資産経常利益率(ROA)、1株当たり当期純利益(EPS)他



		円/株				
		12/3	13/3	14/3	15/3	16/3 予想 (Forecast)
自己資本利益率	ROE	11.2%	11.8%	12.1%	9.9%	9.0%
総資産経常利益率	ROA	6.4%	8.5%	9.3%	7.9%	7.1%
1株当たり当期純利益	EPS	71.47	83.70	101.60	98.29	98.81
1株当たり営業キャッシュ・フロー	Cash Flows per Share	111.27	120.29	180.32	184.66	-

②株価収益率(PER)、株価純資産倍率(PBR)、株価営業キャッシュ・フロー倍率(PCFR)



	12/3	13/3	14/3	15/3	15/9
期末日株価(円) : Closing Share Price at Fiscal Year End (¥)	890	981	957	1,253	1,155
株価収益率: PER (倍/Times)	12.45	11.72	9.42	12.75	12.40
株価営業キャッシュ・フロー倍率(倍/Times) : Price Operating Cash Flows Ratio	8.0	8.2	5.3	6.8	7.3
株価純資産倍率: PBR (倍/Times)	1.4	1.3	1.1	1.2	1.0

15/9 株価収益率は、第2四半期連結累計期間の1株当たり純利益(46.56円)×2を使用

15/9 PER; EPS (¥46.56) in the 1st half × 2

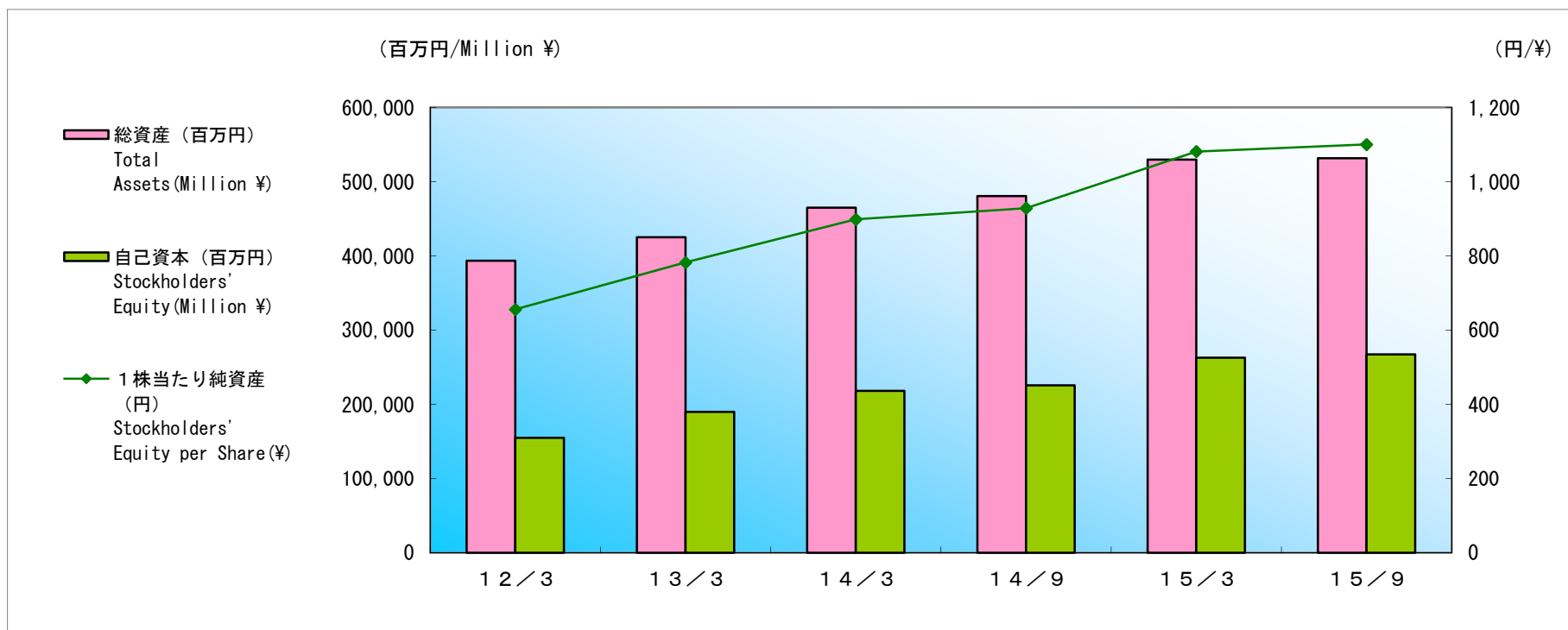
15/9 株価営業キャッシュ・フロー倍率は、第2四半期連結累計期間の1株当たり営業キャッシュ・フロー(79.38円)×2を使用

15/9 Price Operating Cash Flows Ratio; Cash Flow Per Share (¥79.38) in the 1st half × 2

財政状態

Financial Condition

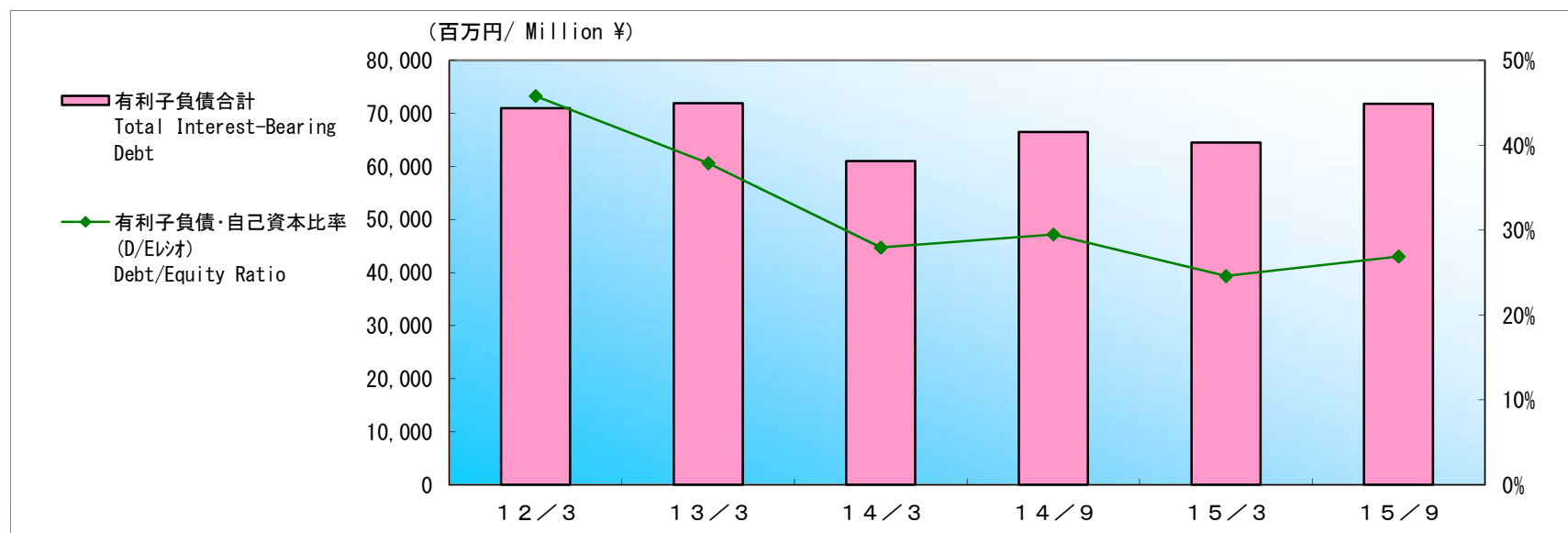
(1) 総資産、自己資本、自己資本比率、1株当たり純資産 Total Assets, Stockholders' Equity, Stockholders' Equity Ratio, Stockholders' Equity per Share



		12/3	13/3	14/3	14/9	15/3	15/9
総資産 (百万円)	Total Assets (Million ¥)	393,695	425,050	464,972	480,484	529,899	531,824
自己資本 (百万円)	Stockholders' Equity (Million ¥)	154,911	190,000	218,269	225,556	262,654	267,291
自己資本比率	Stockholders' Equity to Total Assets Ratio	39.3%	44.7%	46.9%	46.9%	49.6%	50.3%
1株当たり純資産 (円)	Stockholders' Equity per Share (¥)	655.86	782.23	898.62	928.62	1,081.36	1,100.45

(2) 有利子負債、有利子負債・自己資本比率(D/Eレシオ)

Interest-Bearing Debt, Debt/Equity Ratio

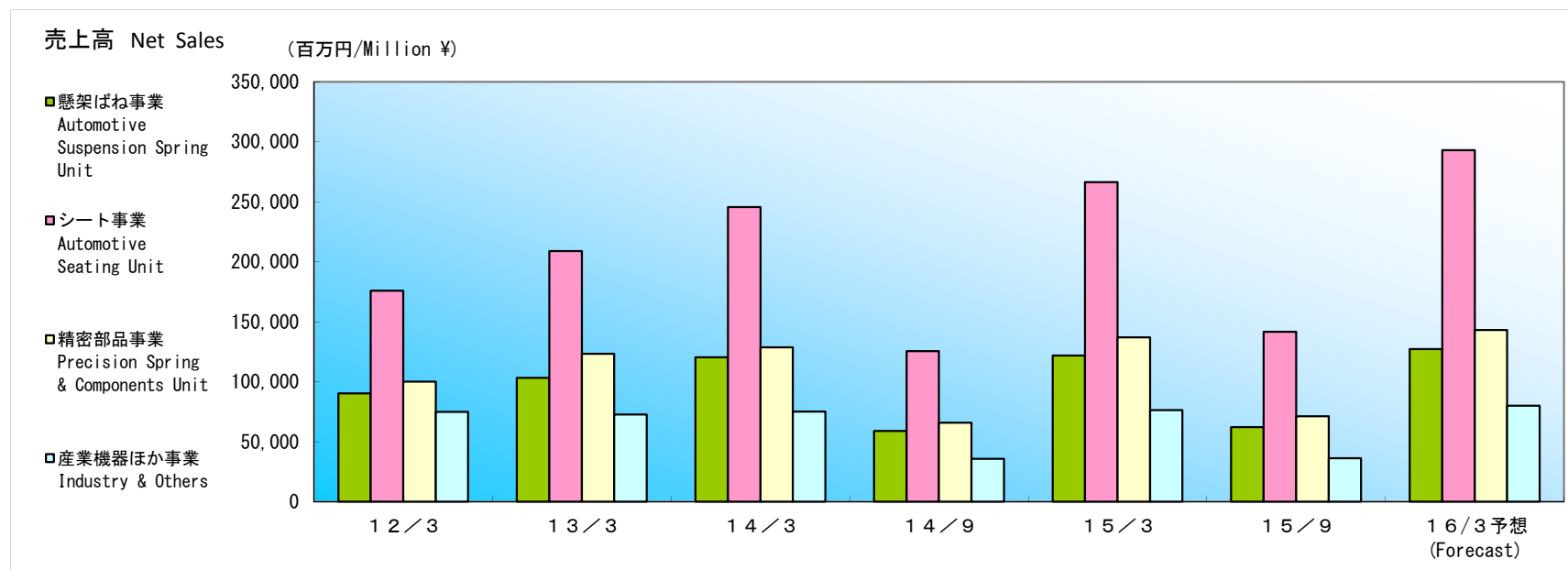


		百万円/ Million ¥					
		12/3	13/3	14/3	14/9	15/3	15/9
短期借入金	Short-Term Debt	25,077	26,646	29,245	33,537	41,068	46,608
長期借入金	Long-Term Debt	37,139	45,057	47,858	43,087	40,738	48,382
(うち一年以内返済)	(Due Within One Year)	(13,057)	(15,959)	(13,650)	(10,806)	(11,171)	(13,744)
内部取引の消去	Intersegment Sales	(17,213)	(29,745)	(46,089)	(51,051)	(57,305)	(65,164)
借入金合計	Total Borrowings	45,003	41,958	31,013	25,574	24,501	29,825
社債	Corporate Bond	20,000	20,000	20,000	30,945	32,017	31,996
(うち一年以内償還)	(Due Within One Year)	(-)	(-)	(-)	(-)	(10,000)	(20,000)
コマーシャル・ペーパー	Commercial Paper	6,000	10,000	10,000	10,000	8,000	10,000
有利子負債合計	Total Interest-Bearing Debt	71,003	71,958	61,013	66,519	64,518	71,821
有利子負債・自己資本比率(D/Eレシオ)	Debt/Equity Ratio	45.8%	37.9%	28.0%	29.5%	24.6%	26.9%
純有利子負債合計	Net Interest-Bearing Debt	11,786	14,821	(1,242)	(2,651)	(19,182)	(16,415)

セグメント情報

Segment Information

(1) 事業の種類別セグメント情報 Segment by Business Group



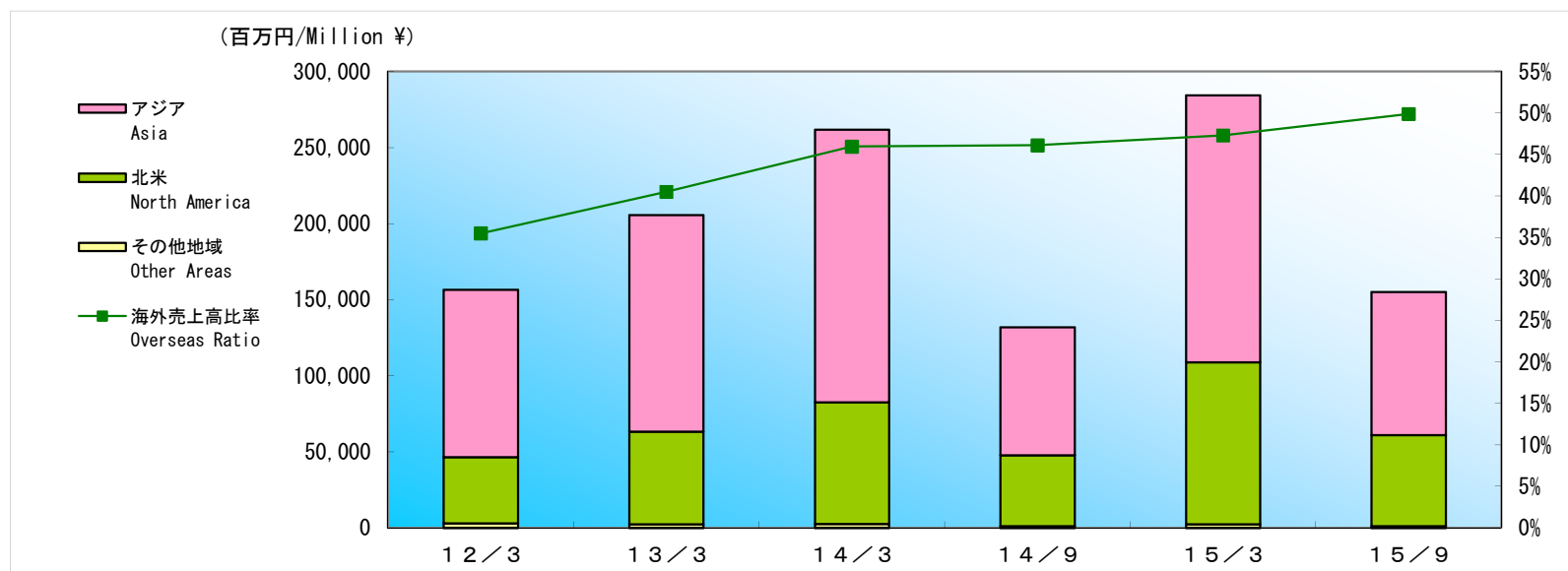
百万円/ Million ¥

		12/3	13/3	14/3	14/9	15/3	15/9	16/3 予想 (Forecast)
売上高:	懸架ばね事業 Automotive Suspension Spring Unit	90,334	103,213	120,422	59,069	121,769	62,118	127,100
Net Sales	シート事業 Automotive Seating Unit	175,714	208,773	245,549	125,486	266,270	141,653	293,000
	精密部品事業 Precision Spring & Components Unit	99,961	123,373	128,620	65,725	137,035	71,126	143,000
	産業機器ほか事業 Industry & Others	74,742	72,625	75,118	35,691	76,359	36,225	79,900
	連結 Consolidated	440,752	507,985	569,711	285,972	601,434	311,123	643,000
セグメント利益:								
(営業利益)	懸架ばね事業 Automotive Suspension Spring Unit	6,814	10,245	15,284	3,379	8,779	5,501	11,900
Segment Profit	シート事業 Automotive Seating Unit	8,134	13,543	12,615	4,828	11,069	3,564	10,500
(Operating Income)	精密部品事業 Precision Spring & Components Unit	3,508	2,919	5,597	3,389	8,706	4,897	9,500
	産業機器ほか事業 Industry & Others	4,036	3,312	3,982	1,419	4,147	1,577	4,100
	連結 Consolidated	22,493	30,020	37,480	13,017	32,702	15,541	36,000

(2) 所在地別セグメント Segment by Location

			百万円/ Million ¥						
			1 2 / 3	1 3 / 3	1 4 / 3	1 4 / 9	1 5 / 3	1 5 / 9	1 6 / 3 予想 (Forecast)
売上高 :	日本 :	Japan							
Net Sales	対外部顧客	For Customers	313,677	333,230	341,363	172,794	355,186	174,349	364,100
	セグメント間	Intersegment	20,376	15,670	18,514	8,860	21,060	11,244	19,000
	計	Total	334,054	348,901	359,878	181,654	376,246	185,594	383,100
	アジア :	Asia							
	対外部顧客	For Customers	87,363	117,803	154,795	70,788	148,767	80,446	165,100
	セグメント間	Intersegment	1,338	1,587	2,372	1,219	2,508	1,184	2,400
	計	Total	88,702	119,391	157,168	72,008	151,276	81,631	167,500
	北米ほか :	North America & Others							
	対外部顧客	For Customers	39,711	56,951	73,552	42,390	97,479	56,327	113,800
	セグメント間	Intersegment	276	320	371	183	445	235	500
	計	Total	39,988	57,272	73,924	42,573	97,925	56,562	114,300
	消去	Intersegment Sales	(21,992)	(17,579)	(21,259)	(10,264)	(24,014)	(12,664)	(21,900)
	連結	Consolidated	440,752	507,985	569,711	285,972	601,434	311,123	643,000
営業利益 :	日本	Japan	15,809	17,930	22,392	10,836	25,070	9,922	22,900
Operating Income	アジア	Asia	6,299	10,005	12,834	5,362	9,836	4,178	9,900
	北米ほか	North America & Others	383	2,084	2,253	(3,180)	(2,204)	1,440	3,200
	連結	Consolidated	22,493	30,020	37,480	13,017	32,702	15,541	36,000

(3) 地域別売上高 Sales by Region



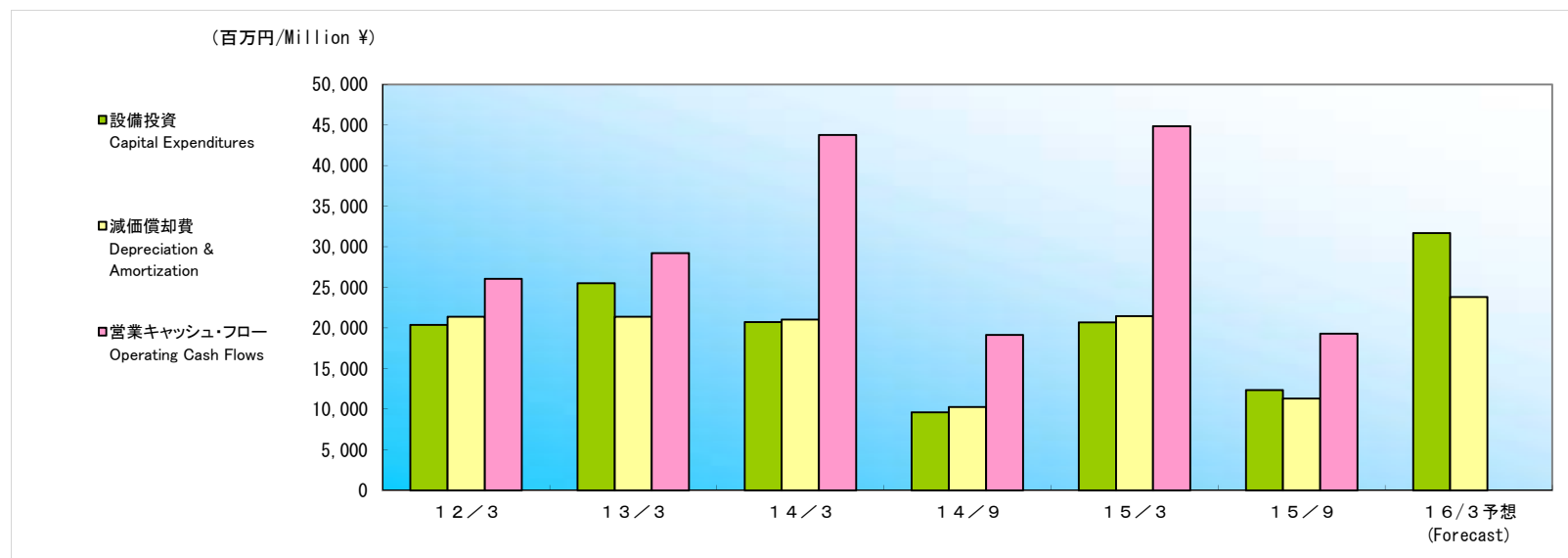
		百万円/ Million ¥						
			1 2 / 3	1 3 / 3	1 4 / 3	1 4 / 9	1 5 / 3	1 5 / 9
アジア	売上高	Net Sales	110,102	142,366	179,266	84,096	175,474	94,150
Asia	構成比	Composition	25.0%	28.0%	31.5%	29.4%	29.2%	30.3%
	前年比	Year-over-Year	(16.4%)	29.3%	25.9%	(6.1%)	(2.1%)	12.0%
北米	売上高	Net Sales	43,353	61,060	80,004	46,556	106,581	59,820
North America	構成比	Composition	9.8%	12.0%	14.0%	16.3%	17.7%	19.2%
	前年比	Year-over-Year	(5.3%)	40.8%	31.0%	20.7%	33.2%	28.5%
その他地域	売上高	Net Sales	3,077	2,290	2,503	1,199	2,404	1,213
Other Areas	構成比	Composition	0.7%	0.5%	0.4%	0.4%	0.4%	0.4%
	前年比	Year-over-Year	55.3%	(25.6%)	9.3%	(15.2%)	(3.9%)	1.1%
海外売上高合計		Overseas Total	156,533	205,716	261,774	131,852	284,460	155,185
海外売上高比率		Overseas Ratio	35.5%	40.5%	45.9%	46.1%	47.3%	49.9%

※上記は未監査の数字です。

※The above is exempt from Quarterly review (audit) .

設備投資、減価償却費、営業キャッシュ・フロー

Capital Expenditures, Depreciation & Amortization, Operating Cash Flows



		百万円/ Million ¥						
		12/3	13/3	14/3	14/9	15/3	15/9	16/3 予想 (Forecast)
設備投資	Capital Expenditures	20,370	25,506	20,713	9,604	20,671	12,359	31,711
前年比	Year-over-Year	(0.8%)	25.2%	(18.8%)	(4.6%)	(0.2%)	28.7%	53.4%
減価償却費	Depreciation & Amortization	21,371	21,393	21,042	10,279	21,448	11,298	23,825
前年比	Year-over-Year	(5.4%)	0.1%	(1.6%)	0.3%	1.9%	9.9%	11.1%
営業キャッシュ・フロー	Operating Cash Flows	26,063	29,222	43,798	19,144	44,853	19,281	-
前年比	Year-over-Year	(51.2%)	12.1%	49.9%	2.0%	2.4%	0.7%	-

* 事業セグメント別設備投資・減価償却費内訳 Capital Expenditure, Depreciation & Amortization by Sales Composition

事業セグメント	項目	12/3	13/3	14/3	14/9	15/3	15/9	16/3 予想 (Forecast)
懸架ばね事業 Automotive Suspension Spring Unit	設備投資 Capital Expenditures	4,159	4,778	5,067	3,490	7,148	4,250	12,045
	減価償却費 Depreciation & Amortization	4,128	4,158	4,603	2,486	5,196	2,752	6,300
シート事業 Automotive Seating Unit	設備投資 Capital Expenditures	5,330	7,245	4,132	2,337	4,887	2,448	5,573
	減価償却費 Depreciation & Amortization	4,665	4,784	4,902	2,297	4,725	2,696	5,656
精密部品事業 Precision Spring & Components Unit	設備投資 Capital Expenditures	9,487	11,016	9,741	3,028	7,029	4,625	11,308
	減価償却費 Depreciation & Amortization	10,631	10,475	9,453	4,532	9,495	4,779	9,599
産業機器ほか事業 Industry & Others	設備投資 Capital Expenditures	1,392	2,466	1,772	748	1,606	1,036	2,785
	減価償却費 Depreciation & Amortization	1,946	1,975	2,082	963	2,030	1,070	2,269

研究開発費

Research & Development

百万円/ Million ¥

		13/3	14/3	15/3	15/9	16/3 予想 (Forecast)
研究開発費	Research & Development (Million ¥)	11,750	13,803	15,702	7,914	16,613
売上高比率	R&D per Sales Ratio	2.3%	2.4%	2.6%	2.5%	2.6%

連結対象会社数

Number of Consolidated Subsidiaries

		13/3	14/3	14/9	15/3	15/9
連結子会社 :	Consolidated Subsidiaries					
国内	Domestic	17	17	17	17	17
海外	Overseas	14	15	18	18	18
計	Total	31	32	35	35	35
持分法適用会社 :	Affiliated Companies					
国内	Domestic	5	4	4	4	4
海外	Overseas	2	5	5	5	5
計	Total	7	9	9	9	9

連結貸借対照表 Consolidated Balance Sheets

百万円/ Million ¥

資産の部	Assets	1 2 / 3	1 3 / 3	1 4 / 3	1 4 / 9	1 5 / 3	1 5 / 9
流動資産	Current Assets						
現金及び預金	Cash and Bank Deposits	59,217	57,137	62,256	69,170	83,701	88,237
受取手形及び売掛金	Notes and Accounts Receivable, Trade	101,631	109,535	126,652	125,589	135,432	130,272
たな卸資産	Inventories	33,072	35,235	37,238	40,393	43,649	45,066
繰延税金資産	Deferred Income Taxes	3,992	4,296	4,251	4,574	4,974	4,930
その他	Other Current Assets	15,171	15,773	19,880	19,645	20,886	22,276
貸倒引当金	Allowance for Doubtful Receivables	(177)	(63)	(105)	(23)	(28)	(15)
流動資産合計	Total Current Assets	212,907	221,914	250,175	259,350	288,616	290,768
固定資産	Noncurrent Assets						
有形固定資産	Property, Plant and Equipment, Net						
建物及び構築物	Buildings and Structures	40,440	42,890	46,633	47,712	49,473	48,946
機械装置及び運搬具	Machinery and Equipment	33,569	38,222	41,432	43,103	46,874	47,139
土地	Land	28,871	31,713	32,166	31,526	31,751	31,594
リース資産	Lease Assets	2,842	1,917	1,493	1,107	803	544
建設仮勘定	Construction in Progress	6,183	7,469	8,911	7,066	10,138	11,997
その他	Others	5,271	6,627	6,945	9,054	8,244	8,488
有形固定資産合計	Total Property, Plant and Equipment, Net	117,178	128,841	137,583	139,571	147,287	148,711
無形固定資産	Goodwill and Intangible Assets						
のれん	Goodwill	—	228	461	399	334	269
その他	Others	2,797	3,460	4,207	4,339	4,682	4,497
無形固定資産合計	Total Goodwill and Intangible Assets	2,797	3,689	4,669	4,739	5,017	4,767
投資その他の資産	Investments, Long-Term Receivables and Other Assets						
投資有価証券	Investment Securities	48,261	53,470	55,859	61,484	71,821	68,617
長期貸付金	Long-Term Loans	1,047	3,988	3,719	2,640	3,947	4,821
繰延税金資産	Deferred Income Taxes	3,206	3,316	4,095	4,605	4,763	5,358
その他	Other Investments	8,464	9,984	9,034	8,256	9,009	9,353
貸倒引当金	Allowance for Doubtful Receivables	(168)	(154)	(164)	(162)	(563)	(572)
投資その他の資産合計	Total Investments, Long-Term Receivables and Other Assets	60,812	70,604	72,544	76,823	88,978	87,577
固定資産合計	Total Noncurrent Assets	180,788	203,135	214,797	221,134	241,282	241,056
資産合計	Total Assets	393,695	425,050	464,972	480,484	529,899	531,824

連結貸借対照表

Consolidated Balance Sheets

百万円/ Million ¥

負債及び純資産の部		Liabilities and Net Assets	1 2 / 3	1 3 / 3	1 4 / 3	1 4 / 9	1 5 / 3	1 5 / 9
負債の部	Liabilities							
流動負債	Current Liabilities							
支払手形及び買掛金	Notes and Accounts Payable		77,904	69,601	77,972	78,696	87,626	81,645
電子記録債務	Electronically Recorded Obligations		29,953	25,417	28,637	30,356	30,229	28,871
短期借入金	Bank Loans		22,581	20,242	10,759	8,015	9,062	10,875
未払法人税等	Income Taxes		3,422	6,381	8,120	3,776	5,862	4,643
繰延税金負債	Deferred Income Taxes		768	834	878	741	621	649
役員賞与引当金	Allowance for Directors' Bonuses		229	260	249	148	301	132
設備支払手形	Equipment Notes Payable		2,089	2,584	1,464	2,073	2,361	2,566
その他	Others		26,806	34,705	38,606	37,966	48,317	58,499
流動負債合計	Total Current Liabilities		163,754	160,028	166,688	161,773	184,381	187,884
固定負債	Long-Term Liabilities							
社債	Corporate Bond		20,000	20,000	20,000	20,000	10,000	—
転換社債型新株予約権付社債	Convertible Bond-type Bonds with Subscription Rights to Shares		—	—	—	10,945	12,017	11,996
長期借入金	Long-Term Debt		22,421	21,715	20,254	17,558	15,439	18,949
リース債務	Lease Obligations		2,404	1,767	1,308	1,019	750	545
繰延税金負債	Deferred Income Taxes		6,845	8,277	8,464	9,446	13,067	12,152
退職給付引当金	Provision for Retirement Benefits		9,425	11,267	—	—	—	—
退職給付に係る負債	Net Defined Benefit Liability		—	—	15,444	19,417	15,233	16,325
役員退職慰労引当金	Provision for Directors' Retirement Benefits		607	588	545	580	643	513
執行役員退職慰労引当金	Provision for Officers' Retirement Benefits		688	663	598	677	679	655
持分法適用に伴う負債	Liabilities from Application of Equity Method		—	—	208	314	234	400
その他	Others		807	958	1,419	1,338	2,560	2,476
固定負債合計	Total Long-Term Liabilities		63,201	65,238	68,243	81,299	70,624	64,015
負債合計	Total Liabilities		226,956	225,266	234,932	243,073	255,006	251,900
純資産の部	Net Assets							
株主資本	Stockholders' Equity							
資本金	Common Stock		17,009	17,009	17,009	17,009	17,009	17,009
資本剰余金	Additional Paid-in Capital		17,900	19,308	19,308	19,308	19,308	19,404
利益剰余金	Retained Earnings		127,904	144,436	163,920	169,131	179,985	188,866
自己株式	Treasury Stock		(5,345)	(794)	(796)	(797)	(798)	(800)
株主資本合計	Total Stockholders' Equity		157,469	179,959	199,441	204,651	215,505	224,480
その他の包括利益累計額	Accumulated Other Comprehensive Income (Loss)							
その他有価証券評価差額金	Unrealized Gain or Loss on Available-for-Sale Securities		13,413	16,533	16,740	19,797	27,247	24,716
繰延ヘッジ損益	Deferred Gain or Loss on Hedges		—	—	—	—	—	(5)
為替換算調整勘定	Cumulative Translation Adjustments		(15,971)	(6,492)	4,782	3,474	19,063	17,999
退職給付に係る調整累計額	Remeasurements of Defined Benefit Plans		—	—	(2,695)	(2,367)	838	99
その他の包括利益累計額合計	Total Accumulated Other Comprehensive Income (Loss)		(2,557)	10,040	18,828	20,904	47,149	42,810
非支配株主持分※	Non-Controlling Interests※		11,827	9,782	11,770	11,855	12,238	12,632
純資産合計	Total Net Assets		166,739	199,783	230,040	237,411	274,893	279,924
負債及び純資産合計	Total Liabilities and Net Assets		393,695	425,050	464,972	480,484	529,899	531,824

※2015年度より、「企業結合に関する会計基準」(企業会計基準第21号 平成25年9月13日)等を適用し、「少数株主持分」を「非支配株主持分」としております。

※Due to the ASBJ Statement No.21, "Revised Accounting Standard for Business Combinations", effective from FY2015, "Minority Interests" will now be presented as "Non-Controlling Interests".

連結損益計算書

Consolidated Income Statements

		百万円/ Million ¥					
		1 2 / 3	1 3 / 3	1 4 / 3	1 4 / 9	1 5 / 3	1 5 / 9
売上高	Net Sales	440,752	507,985	569,711	285,972	601,434	311,123
売上原価	Cost of Sales	384,643	441,316	492,603	252,820	526,436	273,887
売上総利益	Gross Profit	56,109	66,668	77,107	33,152	74,997	37,236
販売費及び一般管理費	Selling General and Administrative Expenses	33,616	36,648	39,627	20,134	42,295	21,694
営業利益	Operating Income	22,493	30,020	37,480	13,017	32,702	15,541
営業外収益	Non-Operating Income	4,294	7,130	6,138	3,389	8,708	2,512
受取利息及び配当金	Interest Income and Dividends Income	1,599	1,424	1,741	961	1,988	1,186
持分法による投資利益	Investment Profit on Equity Method	865	336	355	34	235	—
不動産賃貸料	Real Estate Rental Income	833	705	639	310	616	293
その他	Others	996	4,664	3,402	2,083	5,868	1,031
営業外費用	Non-Operating Expenses	2,903	2,243	2,182	865	2,335	975
支払利息	Interest Expense	887	777	538	206	398	154
固定資産除却損	Loss on Disposal of Fixed Assets	317	272	629	187	394	93
その他	Others	1,699	1,193	1,014	470	1,542	727
経常利益	Ordinary Income	23,884	34,907	41,436	15,541	39,075	17,078
特別利益	Extraordinary Gains	861	877	79	153	153	—
固定資産売却益	Gains on Sales of Fixed Assets	99	199	—	153	153	—
投資有価証券売却益	Gains on Sales of Investments in Securities	523	—	—	—	—	—
その他	Others	238	678	79	—	—	—
特別損失	Extraordinary Losses	945	3,083	1,184	601	2,037	68
減損損失	Impairment Loss on Fixed Assets	350	2,309	55	601	601	—
その他	Others	595	773	1,128	—	1,436	68
税金等調整前当期純利益	Net Income before Taxes	23,799	32,701	40,331	15,094	37,191	17,009
法人税等	Income Taxes	6,328	10,769	15,249	3,831	11,857	5,131
法人税等調整額	Deferred Taxes	(731)	211	(1,270)	(31)	(99)	(159)
当期純利益	Net Income	18,201	21,719	26,352	11,294	25,432	12,037
非支配株主に帰属する 当期純利益※	Profit Attributable to Non-Controlling Interests※	1,460	1,385	1,674	705	1,559	728
親会社株主に帰属する 当期純利益※	Profit Attributable to Owners of Parent※	16,741	20,333	24,677	10,589	23,873	11,309

※2015年度より、「企業結合に関する会計基準」（企業会計基準第21号 平成25年9月13日）等を適用し、「当期純利益」を「親会社株主に帰属する当期純利益」、
「少数株主利益」を「非支配株主に帰属する当期純利益」としております。

※Due to the ASBJ statement No.21 “Revised Accounting Standard for Business Combination”, effective from FY2015, “Minority Interests” and “Net Income”
will now be presented as “Non-Controlling Interests” and “Profit Attributable to Owners of Parent” respectively.

連結キャッシュ・フロー計算書

Consolidated Cash Flows Statements

百万円/ Million ¥

		1 2 / 3	1 3 / 3	1 4 / 3	1 4 / 9	1 5 / 3	1 5 / 9
営業活動によるキャッシュ・フロー	Operating Activities						
税金等調整前当期純利益	Net Income before Taxes	23,799	32,701	40,331	15,094	37,191	17,009
減価償却費	Depreciation & Amortization	21,371	21,393	21,042	10,279	21,448	11,298
減損損失	Impairment Loss on Fixed Assets	350	2,309	55	601	601	—
退職給付引当金増減額	Increase (Decrease) in Retirement Benefits	(503)	175	—	—	—	—
退職給付に係る負債の増減額	Increase (Decrease) in Net Defined Benefit Liability	—	—	(557)	(148)	(483)	12
受取利息及び受取配当金	Interest and Dividends Received	(1,599)	(1,424)	(1,741)	(961)	(1,988)	(1,186)
支払利息	Interest Expenses	887	777	538	206	398	154
為替差損益	Exchange (Profit) Loss	304	(872)	(720)	(576)	(1,754)	(193)
持分法による投資損益	Investment (Profit) Loss on Equity Method	(865)	(336)	(355)	(34)	(235)	46
有形固定資産除売却損益	(Gain) Loss on Property, Plant and Equipment	250	44	1,050	0	200	139
投資有価証券売却損益	(Gain) Loss on Sales of Short-Term Investments and Investment Securities	(503)	—	130	—	—	(60)
売上債権の増減額	(Increase) Decrease in Notes and Accounts Receivable	(25,111)	824	(12,318)	568	(2,919)	4,883
たな卸資産の増減額	(Increase) Decrease in Inventories	(1,380)	1,995	278	(2,277)	(3,639)	(1,537)
仕入債務の増減額	Increase (Decrease) in Notes and Accounts Payable	17,607	(22,843)	6,777	1,737	5,624	(7,328)
その他	Others	(2,441)	1,415	1,036	1,557	2,409	1,038
小 計	Subtotal	32,167	36,162	55,546	26,047	56,852	24,276
利息及び配当金の受取額	Interest and Dividends Received in Cash	3,105	2,119	2,705	1,802	2,888	1,539
利息の支払額	Interest Paid	(871)	(795)	(572)	(217)	(438)	(137)
法人税等の支払額又は還付額 (支払額)	Income Taxes (Paid) Refund	(8,338)	(8,263)	(13,881)	(8,486)	(14,449)	(6,397)
営業活動によるキャッシュ・フロー	Net Cash Provided by (Used in) Operating Activities	26,063	29,222	43,798	19,144	44,853	19,281

連結キャッシュ・フロー計算書 Consolidated Cash Flows Statements

		百万円/ Million ¥					
		1 2 / 3	1 3 / 3	1 4 / 3	1 4 / 9	1 5 / 3	1 5 / 9
投資活動によるキャッシュ・フロー	Investing Activities						
定期預金の増減額	(Increase) Decrease in Time Deposits	(99)	336	(120)	(83)	126	(277)
有形固定資産の取得による支出	Purchases of Property, Plant and Equipment	(19,164)	(23,461)	(19,294)	(9,611)	(18,964)	(12,584)
有形固定資産の売却による収入	Proceeds from Sales of Property, Plant and Equipment	774	579	1,118	246	768	96
無形固定資産の増減額	(Increase) Decrease in Intangible Fixed Assets	(944)	(1,082)	(546)	(276)	(748)	(189)
投資有価証券の増減額	(Increase) Decrease in Investments in Securities	(8,174)	(2,561)	(3,922)	(1,784)	(3,488)	(1,596)
貸付金の増減額	(Increase) Decrease in Loans Receivable	(195)	(2,984)	(5,004)	(973)	(2,229)	(2,855)
その他	Others	673	45	(145)	(113)	103	585
投資活動によるキャッシュ・フロー	Net Cash Used in Investing Activities	(27,130)	(29,129)	(27,914)	(12,596)	(24,433)	(16,820)
財務活動によるキャッシュ・フロー	Financing Activities						
短期借入金増減額	Increase (Decrease) in Short-Term Debt	920	(4,538)	(4,970)	425	1,099	(147)
長期借入金増減額	Increase (Decrease) in Long-Term Debt	(2,064)	(3,807)	(5,425)	(6,512)	(8,540)	5,442
社債・CPの発行による収入	Proceeds from Issuance of Corporate Bond and Commercial Papers	25,000	28,000	40,000	20,000	38,000	14,000
社債・CPの償還による支出	Redemption of Corporate Bond and Commercial Papers	(12,000)	(24,000)	(40,000)	(20,000)	(40,000)	(12,000)
転換社債型新株予約権付社債の発行による収入	Proceeds from Issuance of Convertible Bond Type Bonds with Subscription Rights to Shares	—	—	—	10,945	10,945	—
自己株式の増減による支出	(Increase) Decrease in Treasury Stock	(9)	(1)	(2)	(0)	(2)	(1)
リース債務の返済による支出	Repayment of Lease Obligation	(642)	(1,581)	(777)	(604)	(827)	(197)
配当金の支払額	Dividends Paid	(3,527)	(3,832)	(4,372)	(2,428)	(4,857)	(2,428)
非支配株主への配当金の支払額※	Dividends Paid to Non-Controlling Interests※	(298)	(701)	(651)	(646)	(1,081)	(178)
連結の範囲の変更を伴わない子会社株式の取得による支出	Payments from Changes in Ownership Interests in Subsidiaries that do not Result in Change in Scope of Consolidation	—	—	—	—	—	(1,284)
その他	Others	1,967	151	—	—	0	—
財務活動によるキャッシュ・フロー	Net Cash Provided by (Used in) Financing Activities	9,347	(10,311)	(16,200)	1,176	(5,264)	3,205
現金及び現金同等物に係る換算差額	Effect of Exchange Rate Changes on Cash and Equivalents	(1,861)	4,153	3,560	(1,375)	5,906	(1,399)
現金及び現金同等物の増減額	Net Increase (Decrease) in Cash and Cash Equivalents	6,418	(6,064)	3,243	6,348	21,061	4,267
現金及び現金同等物の期首残高	Cash and Cash Equivalents at Beginning of Year	52,934	58,773	57,009	61,993	61,993	83,439
新規連結による現金及び現金同等物増加額	Increase in Cash and Cash Equivalents Accompanying Consolidation	—	4,300	1,740	384	384	—
連結子会社の決算期変更に伴う現金及び現金同等物の増減額	Increase (Decrease) in Cash and Cash Equivalents Resulting from Changes in Fiscal Year End of Consolidated Subsidiaries	(579)	—	—	—	—	—
現金及び現金同等物の期末残高	Cash and Cash Equivalents at End of Year	58,773	57,009	61,993	68,726	83,439	87,706

※2015年度より、「企業結合に関する会計基準」(企業会計基準第21号 平成25年9月13日)等を適用し、「少数株主への配当金の支払額」を「非支配株主への配当金の支払額」としております。

※Due to the ASBJ Statement No. 21, "Revised Accounting Standard for Business Combinations", effective from FY2015, "Dividends Paid to Minority Interests" will now be presented as "Dividends Paid to Non-Controlling Interests".

収支状況 Income and Expenditures

1. 連結損益計算書 Consolidated Income Statement

百万円/Million ¥

		実績	実績	予想
		Actual	Actual	Forecast
		14/3	15/3	16/3
売上高	Net Sales	569,711	601,434	643,000
営業利益	Operating Income	37,480 6.6%	32,702 5.4%	36,000 5.6%
経常利益	Ordinary Income	41,436 7.3%	39,075 6.5%	38,000 5.9%
親会社株主に帰属する 当期純利益 ※1	Profit Attributable to Owners of Parent ※1	24,677	23,873	24,000
1株当たり当期純利益	EPS	101.60	98.29	98.81

2. 連結貸借対照表 Consolidated Balance Sheet

百万円/Million ¥

		実績	実績	予想
		Actual	Actual	Forecast
		14/3	15/3	16/3
流動資産	Current Assets	250,175	288,616	291,000
有形固定資産	Property, Plant and Equipment, Net	137,583	147,287	152,000
投資等	Total Investments, Long-Term Receivables and Other Assets	77,213	93,995	99,000
総資産	Total Assets	464,972	529,899	542,000
有利子負債	Interest-Bearing Debt	61,013	64,518	63,000
その他負債	Other Liabilities	173,918	190,487	195,000
非支配株主持分 ※1	Non-Controlling Interests ※1	11,770	12,238	13,200
自己資本	Stockholders' Equity	218,269	262,654	270,800
負債・純資産計	Total Liabilities and Net Assets	464,972	529,899	542,000

ROE ※2	12.1%	9.9%	9.0%
ROA ※3	9.3%	7.9%	7.1%

※1) 2015年度より、「企業結合に関する会計基準」(企業会計基準第21号 平成25年9月13日)等を適用し、「当期純利益」を「親会社株主に帰属する当期純利益」、「少数株主利益」を「非支配株主に帰属する当期純利益」としております。

※1) Due to the ASBJ statement No.21 "Revised Accounting Standard for Business Combination", effective from the FY2015, "Net Income" and "Minority Interests" will now be presented as "Profit Attributable to Owners of Parent" and "Non-Controlling Interests" respectively.

※2) ROE=親会社株主に帰属する当期純利益÷{(当期末純資産+前期末純資産)÷2}×100

※2) ROE=Profit Attributable to Owners of Parent÷{(Net Assets of End of Year+Net Assets of Beginning of Year)÷2}×100

※3) ROA=経常利益÷{(当期末総資産+前期末総資産)÷2}×100

※3) ROA=Ordinary Income÷{(Total Assets of End of Year+Total Assets of Beginning of Year)÷2}×100

3. 分野別セグメント

Segment Information by Business Group

百万円/Million ¥

		実績 Actual	実績 Actual	予想 Forecast
		14/3	15/3	16/3
懸架ばね事業	Automotive Suspension Spring Unit			
売上高	Net Sales	120,422	121,769	127,100
営業利益	Operating Income	15,284	8,779	11,900
利益率	Operating Margin	12.7%	7.2%	9.4%
シート事業	Automotive Seating Unit			
売上高	Net Sales	245,549	266,270	293,000
営業利益	Operating Income	12,615	11,069	10,500
利益率	Operating Margin	5.1%	4.2%	3.6%
精密部品事業	Precision Spring & Components Unit			
売上高	Net Sales	128,620	137,035	143,000
営業利益	Operating Income	5,597	8,706	9,500
利益率	Operating Margin	4.4%	6.4%	6.6%
産業機器ほか事業	Industry & Others			
売上高	Net Sales	75,118	76,359	79,900
営業利益	Operating Income	3,982	4,147	4,100
利益率	Operating Margin	5.3%	5.4%	5.1%
連 結	Consolidated			
売上高	Net Sales	569,711	601,434	643,000
営業利益	Operating Income	37,480	32,702	36,000
利益率	Operating Margin	6.6%	5.4%	5.6%

4. 所在地別セグメント

Segment Information by Location

百万円/Million ¥

		実績 Actual	実績 Actual	予想 Forecast
		14/3	15/3	16/3
日 本	Japan			
売上高	Net Sales	341,363	355,186	364,100
営業利益	Operating Income	22,392	25,070	22,900
利益率	Operating Margin	6.6%	7.1%	6.3%
ア ジ ア	Asia			
売上高	Net Sales	154,795	148,767	165,100
営業利益	Operating Income	12,834	9,836	9,900
利益率	Operating Margin	8.3%	6.6%	6.0%
北 米 ほか	North America & Others			
売上高	Net Sales	73,552	97,479	113,800
営業利益	Operating Income	2,253	(2,204)	3,200
利益率	Operating Margin	3.1%	(2.3%)	2.8%
連 結	Consolidated			
売上高	Net Sales	569,711	601,434	643,000
営業利益	Operating Income	37,480	32,702	36,000
利益率	Operating Margin	6.6%	5.4%	5.6%