

FINANCIAL FACT BOOK 2013

(目次 / CONTENTS)

(頁 / PAGE)

経営成績 (売上高、利益、収益性) Operating Results (Net Sales, Income, and Profitability)	1 - 4
財政状態 (総資産、自己資本、有利子負債) Financial Condition (Total Assets, Stockholders' Equity, and Interest-Bearing Debt)	5 - 6
セグメント情報 (事業の種類別、所在地別、地域別売上高) Segment Information (by Business Group, by Location, and Sales by Region)	7 - 9
設備投資、減価償却費、営業キャッシュ・フロー Capital Expenditures, Depreciation & Amortization, Operating Cash Flows	10
研究開発費 Research & Development	11
連結対象会社数 Number of Consolidated Subsidiaries	11
連結貸借対照表 Consolidated Balance Sheets	12 - 13
連結損益計算書 Consolidated Income Statements	14
連結キャッシュ・フロー計算書 Consolidated Cash Flow Statements	15 - 16

[注記]

業績見通しには、現時点で入手可能な情報と当社の今後の計画等の将来予測が含まれています。国内外の経済事情、為替レート等不確実な要因の状況変化によって、実際の業績が見通しとは大きく異なる可能性があることをご承知おきください。

[Notes]:

These earnings forecasts include information that was currently available at the time and predictions of our company's future plans. Please be aware that actual results may differ greatly from these forecasts because of changes in uncertain factors such as international and domestic economic

2013年5月20日
May 20, 2013

日本発条株式会社
NHK Spring Co., Ltd.

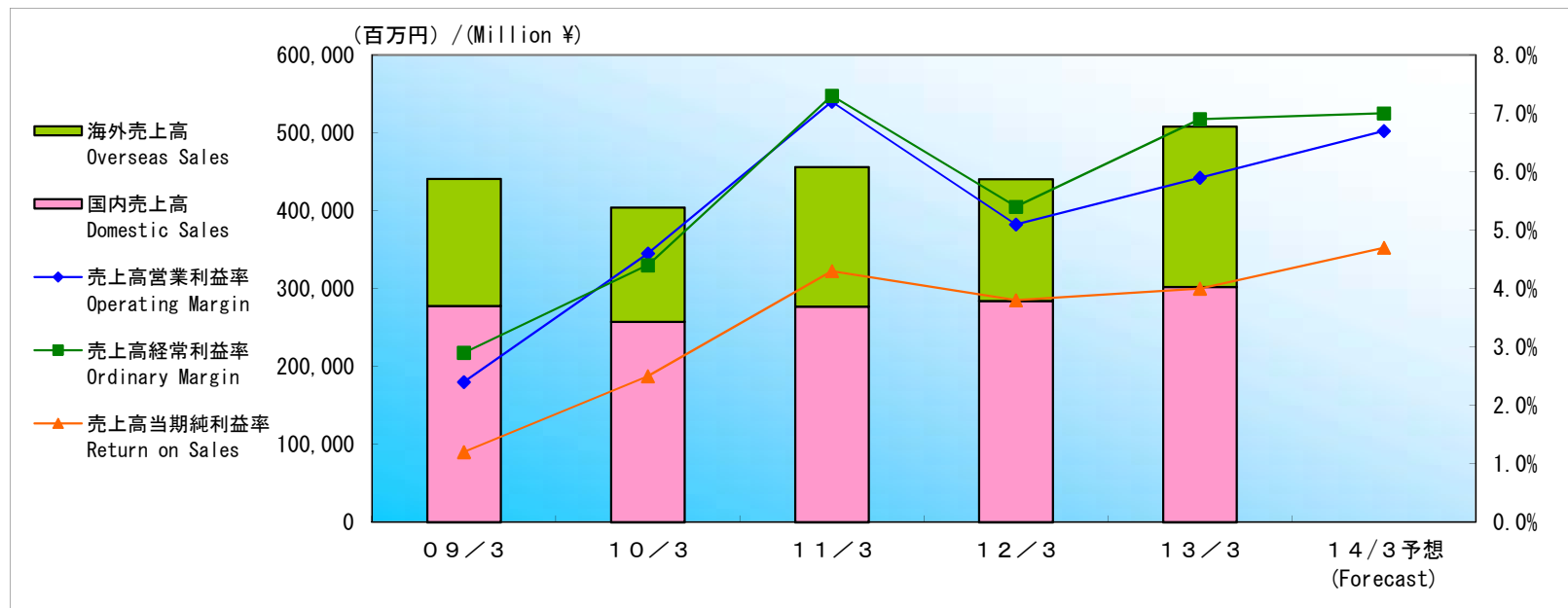
NHKニッパツ

経営成績

Financial Data

(1) 売上高

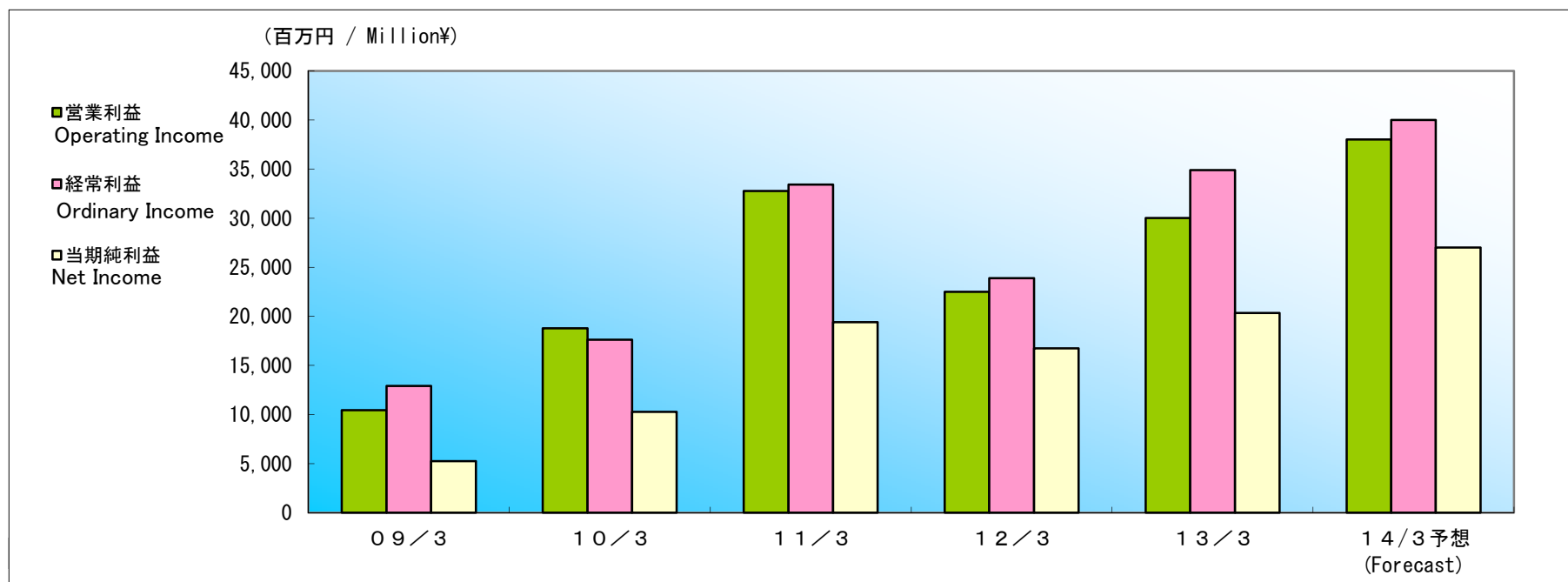
Net Sales



		百万円 / Million ¥					
		09/3	10/3	11/3	12/3	13/3	14/3 予想 (Forecast)
売上高	Net Sales	440,908	404,143	456,198	440,752	507,985	570,000
前年比	Year-over-Year	(9.1%)	(8.3%)	12.9%	(3.4%)	15.3%	12.2%
国内売上高	Domestic Sales	277,740	257,303	276,816	284,219	302,268	-
前年比	Year-over-Year	(5.8%)	(7.4%)	7.6%	2.7%	6.4%	-
海外売上高	Overseas Sales	163,167	146,839	179,381	156,533	205,716	-
前年比	Year-over-Year	(14.1%)	(10.0%)	22.2%	(12.7%)	31.4%	-
売上高営業利益率	Operating Margin	2.4%	4.6%	7.2%	5.1%	5.9%	6.7%
売上高経常利益率	Ordinary Margin	2.9%	4.4%	7.3%	5.4%	6.9%	7.0%
売上高当期純利益率	Return on Sales	1.2%	2.5%	4.3%	3.8%	4.0%	4.7%

(2) 利益

Income

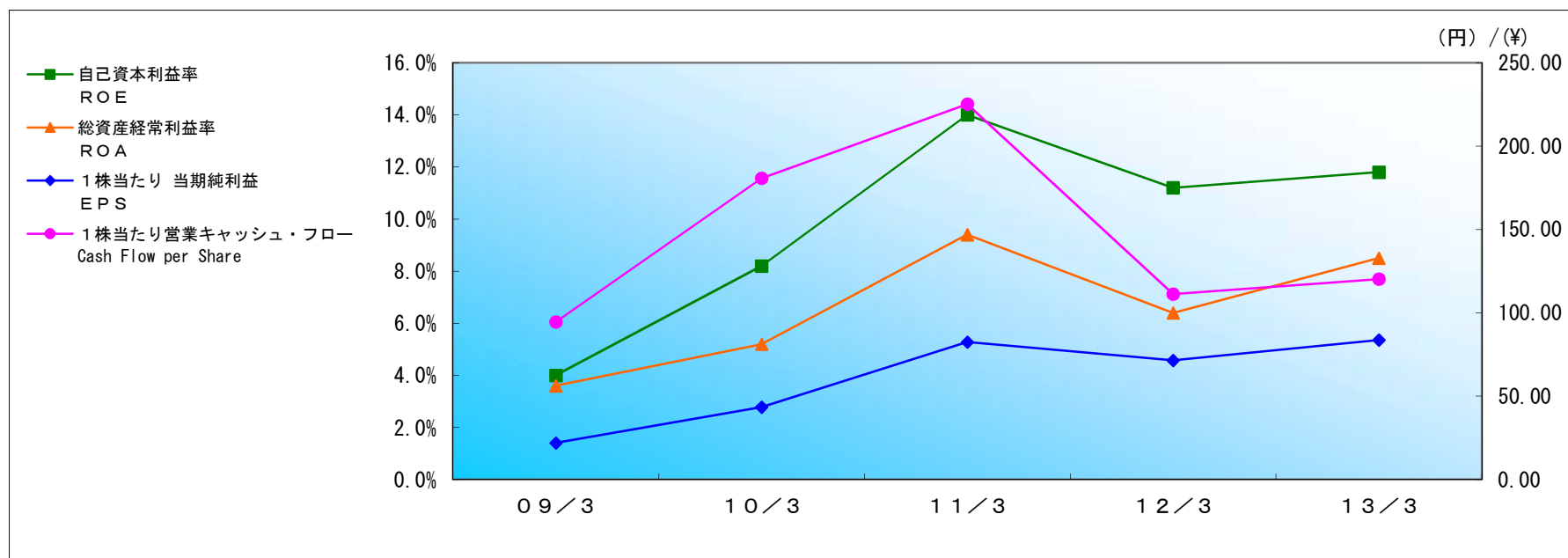


百万円 / Million¥

		09/3	10/3	11/3	12/3	13/3	14/3 予想 (Forecast)
営業利益	Operating Income	10,459	18,785	32,757	22,493	30,020	38,000
前年比	Year-over-Year	(65.5%)	79.6%	74.4%	(31.3%)	33.5%	26.6%
経常利益	Ordinary Income	12,925	17,631	33,407	23,884	34,907	40,000
前年比	Year-over-Year	(58.8%)	36.4%	89.5%	(28.5%)	46.2%	14.6%
当期純利益	Net Income	5,262	10,290	19,420	16,741	20,333	27,000
前年比	Year-over-Year	(74.2%)	95.6%	88.7%	(13.8%)	21.5%	32.8%

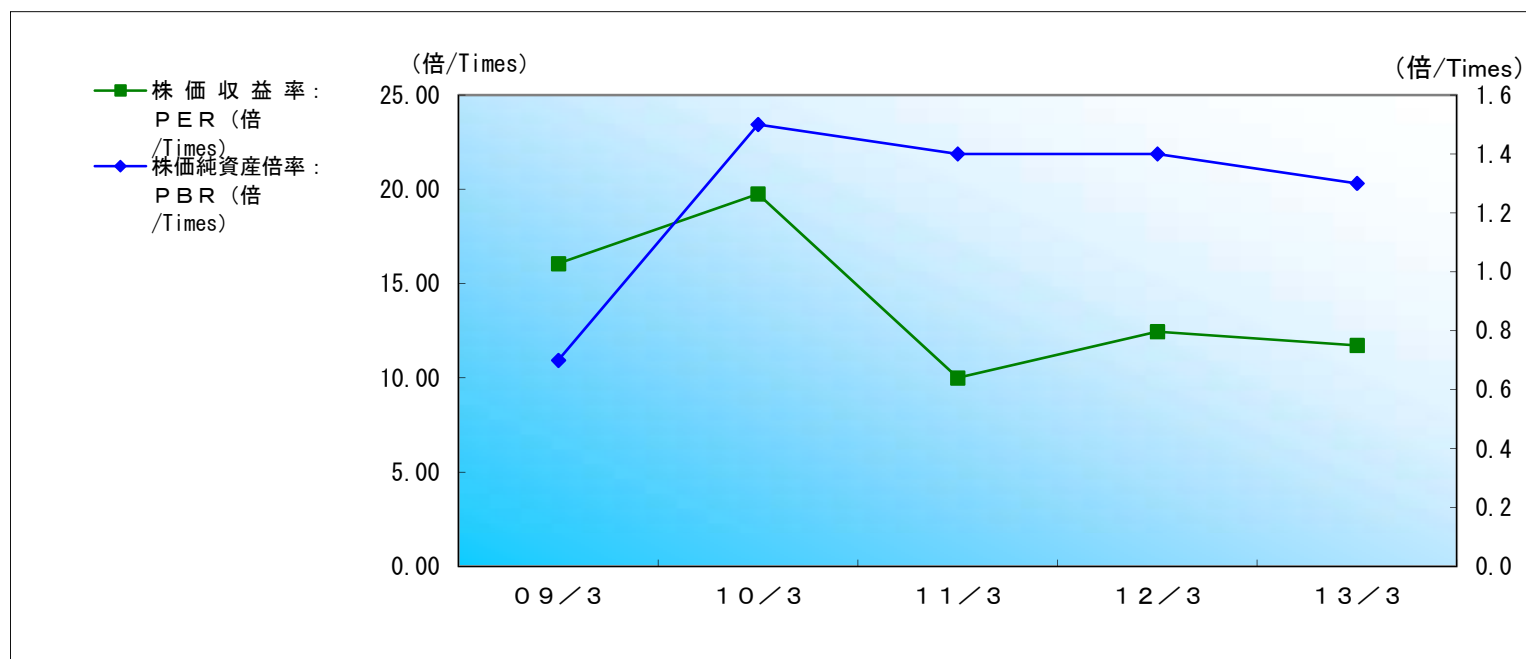
(3) 収益性/ Profitability

①自己資本利益率(ROE)、総資産経常利益率(ROA)、1株当たり当期純利益(EPS) 他



		(円)/(¥)					
		09/3	10/3	11/3	12/3	13/3	14/3 予想 (Forecast)
自己資本利益率	ROE	4.0%	8.2%	14.0%	11.2%	11.8%	-
総資産経常利益率	ROA	3.6%	5.2%	9.4%	6.4%	8.5%	-
1株当たり 当期純利益	EPS	21.98	43.45	82.44	71.47	83.70	111.16
1株当たり営業キャッシュ・フロー	Cash Flow per Share	94.58	180.75	225.24	111.27	120.29	-

②株価収益率(PER)、株価純資産倍率(PBR)、株価営業キャッシュ・フロー倍率(PCFR)



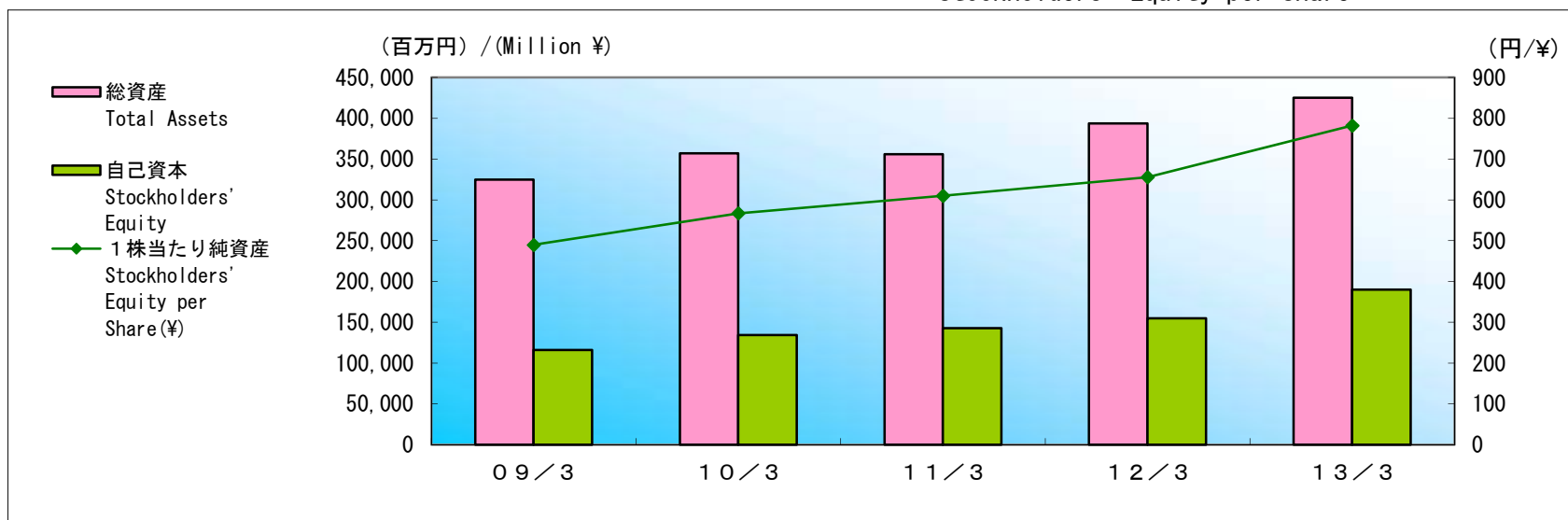
	09/3	10/3	11/3	12/3	13/3
期末日株価(円) : Closing Share Price at Fiscal Year End (¥)	353	858	824	890	981
株価収益率 : PER (倍/Times)	16.06	19.75	10.00	12.45	11.72
株価営業キャッシュ・フロー倍率 (倍/Times) : Price Operating Cash Flow Ratio	3.7	4.7	3.7	8.0	8.2
株価純資産倍率 : PBR (倍/Times)	0.7	1.5	1.4	1.4	1.3

財政状態

Financial Condition

(1) 総資産、自己資本、自己資本比率、1株当たり純資産

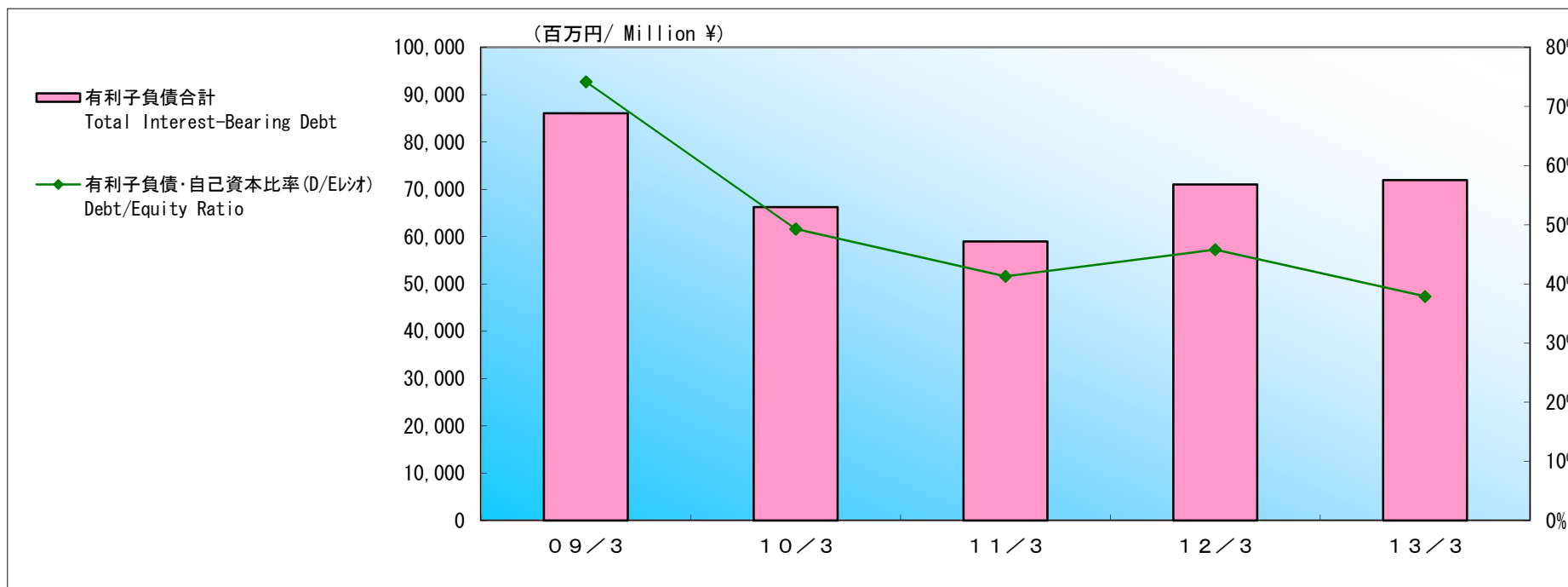
Total Assets, Stockholders' Equity, Stockholders' Equity Ratio, Stockholders' Equity per Share



		百万円/Million ¥				
		09/3	10/3	11/3	12/3	13/3
総資産	Total Assets	324,888	357,141	356,048	393,695	425,050
自己資本	Stockholders' Equity	115,961	134,242	142,804	154,911	190,000
自己資本比率	Stockholders' Equity to Total Assets Ratio	35.7%	37.6%	40.1%	39.3%	44.7%
1株当たり純資産	Stockholders' Equity per Share(¥)	489.57	567.01	610.07	655.86	782.23

(2) 有利子負債、有利子負債・自己資本比率(D/Eレシオ)

Interest-Bearing Debt, Debt/Equity Ratio

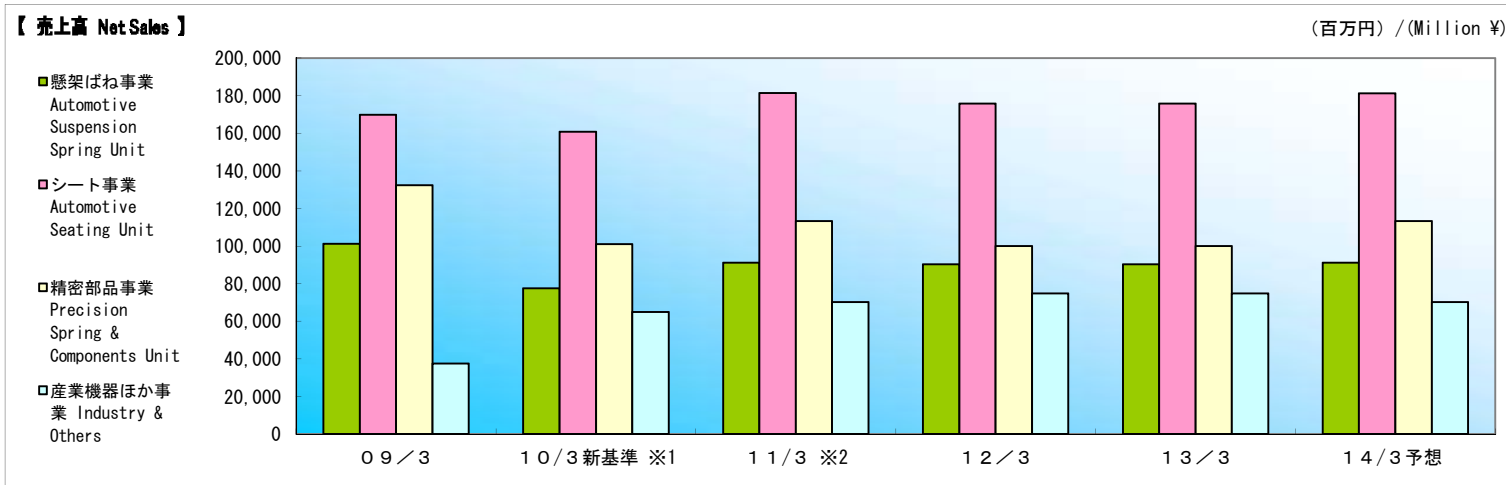


		百万円/ Million ¥				
		09/3	10/3	11/3	12/3	13/3
短期借入金	Short-Term Debt	31,937	20,073	19,512	25,077	26,646
長期借入金	Long-Term Debt	55,973	48,203	37,296	37,139	45,057
(うち一年以内返済)	(Due Within One Year)	(19,857)	(15,617)	(12,841)	(13,057)	(15,959)
内部取引の消去	Intersegment Sales	(4,853)	(5,050)	(10,845)	(17,213)	(29,745)
借入金合計	Total Borrowings	83,057	63,227	45,964	45,003	41,958
社債	Corporate Bond	-	-	10,000	20,000	20,000
コマーシャル・ペーパー	Commercial Paper	3,000	3,000	3,000	6,000	10,000
有利子負債合計	Total Interest-Bearing Debt	86,057	66,227	58,964	71,003	71,958
有利子負債・自己資本比率(D/Eレシオ)	Debt/Equity Ratio	74.2%	49.3%	41.3%	45.8%	37.9%
純有利子負債合計	Net interest-Bearing Debt	54,566	30,205	5,663	11,786	14,821

セグメント情報

Segment Information

(1) 事業の種類別セグメント情報



		09/3	10/3 ※1	11/3 ※2	12/3	13/3	14/3 予想 (Forecast)
売上高:	懸架ばね事業 Automotive Suspension Spring Unit	101,194	77,462	91,206	90,334	103,213	110,000
Net Sales	シート事業 Automotive Seating Unit	169,870	160,740	181,426	175,714	208,773	245,000
	精密部品事業 Precision Spring & Components Unit	132,404	101,073	113,306	99,961	123,373	137,000
	産業機器ほか事業 Industry & Others	37,438	64,866	70,259	74,742	72,625	78,000
	連結 Consolidated	440,908	404,143	456,198	440,752	507,985	570,000
セグメント利益:	懸架ばね事業 Automotive Suspension Spring Unit	344	517	7,168	6,814	10,245	8,900
(営業利益)	シート事業 Automotive Seating Unit	3,537	6,539	9,842	8,134	13,543	15,400
Segment Profit (Operating Income)	精密部品事業 Precision Spring & Components Unit	4,333	9,252	11,818	3,508	2,919	9,700
	産業機器ほか事業 Industry & Others	2,244	2,475	3,927	4,036	3,312	4,000
	連結 Consolidated	10,459	18,785	32,757	22,493	30,020	38,000
	セグメント資産	懸架ばね事業 Automotive Suspension Spring Unit	67,985	68,665	61,956	73,151	71,655
Operating Income	シート事業 Automotive Seating Unit	71,274	91,151	85,016	97,311	98,135	-
	精密部品事業 Precision Spring & Components Unit	127,609	95,579	93,241	87,291	105,879	-
	産業機器ほか事業 Industry & Others	58,019	56,632	58,766	64,981	66,142	-
	調整額 Adjustment	-	45,112	57,067	70,959	83,236	-
経常利益	連結 Consolidated	324,888	357,141	356,048	393,695	425,050	-

※1 2010年度からセグメント区分を変更しております。2010年3月期の新セグメントの数字は、比較を可能にするため組み替えたもので、未監査の数字です。

※1 From FY 2010, the company have reviewed segment category. The figure for FY 2009 are restsed based on new segment category (unaudited).

※2 2011年度から全社費用等を各セグメントに配賦しております。2011年3月期の数字は、比較を可能にするため全社費用等を配賦したもので、未監査の数字です。

※2 From FY 2011, the company have allocated adjustment to each segment category. The figure for FY 2010 are restsed based on new allocation (unaudited).

(2) 所在地別セグメント

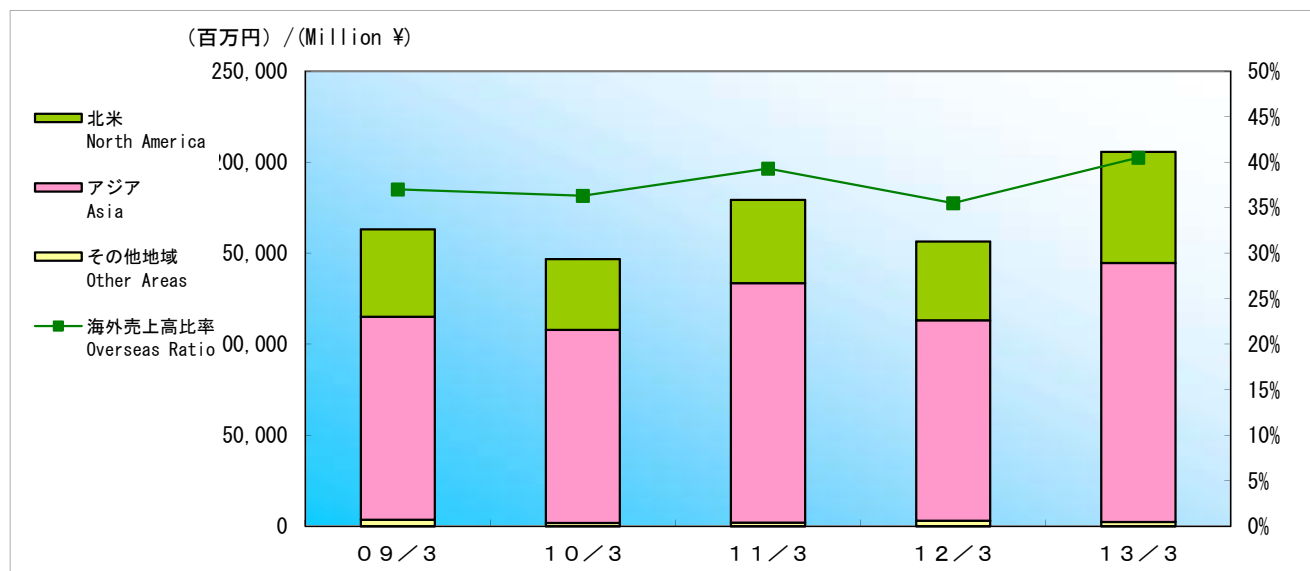
Segment by Location

			百万円/ Million ¥					
			09/3	10/3	11/3	12/3	13/3	14/3 予想 (Forecast)
売上高 :	日本 :	Japan						
Net Sales	対外部顧客	For Customers	305,034	288,589	309,200	313,677	333,230	323,000
	セグメント間	Intersegment	11,394	15,814	17,444	20,376	15,670	15,600
	計	Total	316,428	304,403	326,645	334,054	348,901	338,600
	北米 :	North America						
	対外部顧客	For Customers	45,755	37,239	43,430	39,711	56,951	72,300
	セグメント間	Intersegment	249	259	259	276	320	300
	計	Total	46,005	37,498	43,690	39,988	57,272	72,600
	アジア :	Asia						
	対外部顧客	For Customers	90,117	78,313	103,567	87,363	117,803	174,700
	セグメント間	Intersegment	1,063	1,152	1,384	1,338	1,587	1,600
	計	Total	91,181	79,465	104,951	88,702	119,391	176,300
	消去	Intersegment Sales	(12,707)	(17,225)	(19,088)	(21,992)	(17,579)	(17,500)
	連結	Consolidated	440,908	404,143	456,198	440,752	507,985	570,000
営業利益 :	日本	Japan	1,419	9,708	17,678	15,809	17,930	20,500
Operating Income	北米	North America	192	622	1,657	383	2,084	2,200
	アジア	Asia	8,847	8,455	13,421	6,299	10,005	15,300
	連結	Consolidated	10,459	18,785	32,757	22,493	30,020	38,000
資産 :	日本	Japan	283,910	308,939	301,437	338,148	342,345	-
Assets	北米	North America	23,959	21,975	20,905	26,730	33,285	-
	アジア	Asia	50,200	64,362	72,562	64,900	88,892	-
	全社又は消去	Whole company or Eliminations	(33,181)	(38,136)	(38,856)	(36,084)	(39,472)	-
	連結	Consolidated	324,888	357,141	356,048	393,695	425,050	-

※2011年3月期、2012年3月期及び2013年3月期の所在地別セグメントは比較を可能とするため記載しており未監査の数字です。

※Segment by location results for FY2010, FY2011 and FY2012 which indicated in order to make comparison possible, was exempt from audit.

(3) 地域別売上高 Sales by Region

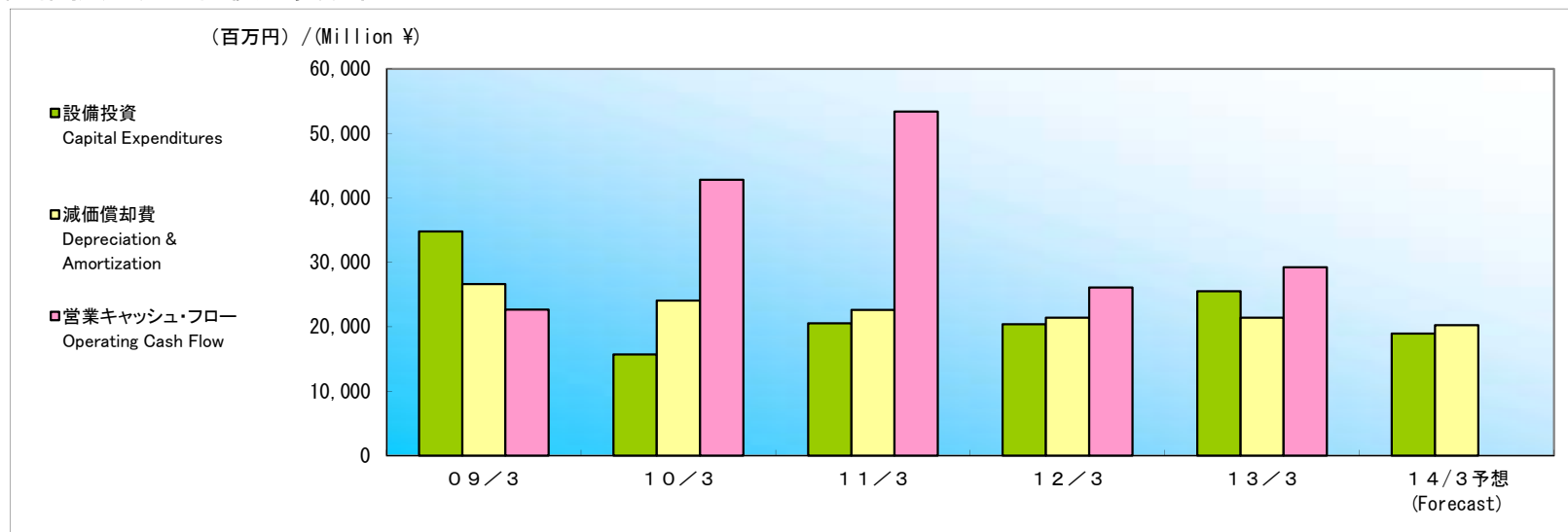


		百万円/ Million ¥					
		09/3	10/3	11/3	12/3	13/3	
北米	売上高	Net Sales	48,055	38,924	45,760	43,353	61,060
North America	構成比	Composition	10.9%	9.6%	10.0%	9.8%	12.0%
	前年比	Year-over-Year	(14.0%)	(19.0%)	17.6%	(5.3%)	40.8%
アジア	売上高	Net Sales	111,584	106,105	131,639	110,102	142,366
Asia	構成比	Composition	25.3%	26.3%	28.9%	25.0%	28.0%
	前年比	Year-over-Year	(14.2%)	(4.9%)	24.0%	(16.4%)	29.3%
その他地域	売上高	Net Sales	3,528	1,809	1,981	3,077	2,290
Other Areas	構成比	Composition	0.8%	0.4%	0.4%	0.7%	0.5%
	前年比	Year-over-Year	(14.3%)	(48.7%)	9.5%	55.3%	(25.6%)
海外売上高合計		Overseas Total	163,167	146,839	179,381	156,533	205,716
海外売上高比率		Overseas Ratio	37.0%	36.3%	39.3%	35.5%	40.5%

※2011年3月期、2012年3月期及び2013年3月期の地域別売上高は比較を可能とするため記載しており未監査の数字です。

※Sales by Region results for FY2010, FY2011 and FY2012 which indicated in order to make comparison possible, was exempt from audit.

設備投資、減価償却費、営業キャッシュ・フロー



		09/3	10/3 新セグメント	11/3	12/3	13/3	14/3 予想 (Forecast)
設備投資	Capital Expenditures	34,800	15,695	20,538	20,370	25,506	18,919
前年比	Year-over-Year	0.1%	(54.9%)	30.9%	(0.8%)	25.2%	(25.8%)
減価償却費	Depreciation & Amortization	26,600	24,074	22,584	21,371	21,393	20,221
前年比	Year-over-Year	16.0%	(9.5%)	(6.2%)	(5.4%)	0.1%	(5.5%)
営業キャッシュ・フロー	Operating Cash Flow	22,639	42,807	53,409	26,063	29,222	-
前年比	Year-over-Year	(33.9%)	89.1%	23.9%	(51.2%)	12.1%	-

* 事業セグメント別設備投資・減価償却費内訳 Capital Expenditure, Depreciation & Amortization by Sales Composition

事業セグメント	項目	09/3	10/3 新セグメント	11/3	12/3	13/3	14/3 予想 (Forecast)
懸架ばね事業 Automotive Suspension Spring Unit	設備投資 Capital Expenditures	9,027	2,305	2,498	4,159	4,778	4,704
	減価償却費 Depreciation & Amortization	6,705	5,031	4,676	4,128	4,158	4,504
シート事業 Automotive Seating Unit	設備投資 Capital Expenditures	8,622	3,312	5,744	5,330	7,245	3,712
	減価償却費 Depreciation & Amortization	5,940	5,880	4,975	4,665	4,784	4,239
精密部品事業 Precision Spring & Components Unit	設備投資 Capital Expenditures	15,475	9,161	10,763	9,487	11,016	8,648
	減価償却費 Depreciation & Amortization	12,608	11,437	11,273	10,631	10,475	9,309
産業機器ほか事業 Industry & Others	設備投資 Capital Expenditures	1,675	916	1,532	1,392	2,466	1,852
	減価償却費 Depreciation & Amortization	1,346	1,724	1,639	1,946	1,975	2,166

※2010年度からセグメント区分を変更しております。2010年3月期の新セグメントの数字は、比較を可能にするため組み替えて表示しております。

※From FY 2010, the company have reviewed segment category. The figure for FY 2009 is restsed based on new segment category for comparison.

研究開発費

Research & Development

		百万円/ Million ¥				
		1 0 / 3	1 1 / 3	1 2 / 3	1 3 / 3	1 4 / 3 予想 (Forecast)
研究開発費	Research & Development (Million ¥)	9,612	9,786	10,055	11,750	14,104
売上高比率	R&D per Sales Ratio	2.4%	2.1%	2.3%	2.3%	2.5%

連結対象会社数

Number of Consolidated Subsidiaries

		1 0 / 3	1 1 / 3	1 2 / 3	1 3 / 3
連結子会社 :	Consolidated Subsidiaries				
国内	Domestic	14	15	16	17
海外	Overseas	12	12	13	14
計	Total	26	27	29	31
持分法適用会社 :	Affiliated Companies				
国内	Domestic	7	6	6	5
海外	Overseas	3	3	2	2
計	Total	10	9	8	7

連結貸借対照表 Consolidated Balance Sheets

百万円/ Million ¥

資産の部	Assets	09/3	10/3	11/3	12/3	13/3
流動資産	Current Assets					
現金及び預金	Cash and Bank Deposits	31,490	36,021	53,300	59,217	57,137
受取手形及び売掛金	Notes and Accounts Receivable, Trade	61,241	88,337	77,950	101,631	109,535
たな卸資産	Inventories	34,845	30,699	31,998	33,072	35,235
繰延税金資産	Deferred Income Taxes	3,891	4,510	4,674	3,992	4,296
その他	Other Current Assets	12,757	14,220	13,424	15,171	15,773
貸倒引当金	Allowance for Doubtful Receivables	(360)	(74)	(351)	(177)	(63)
流動資産合計	Total Current Assets	143,865	173,714	180,996	212,907	221,914
固定資産	Noncurrent Assets					
有形固定資産	Property, Plant and Equipment, Net					
建物及び構築物	Buildings and Structures	43,392	44,232	41,039	40,440	42,890
機械装置及び運搬具	Machinery and Equipment	44,872	40,351	36,074	33,569	38,222
土地	Land	27,332	28,393	29,866	28,871	31,713
リース資産	Lease Assets	3,828	4,180	3,389	2,842	1,917
建設仮勘定	Construction in Progress	7,116	3,324	5,543	6,183	7,469
その他	Others	6,897	5,761	5,631	5,271	6,627
有形固定資産合計	Total Property, Plant and Equipment, Net	133,439	126,245	121,544	117,178	128,841
無形固定資産	Goodwill and Intangible Assets					
のれん	Goodwill	998	367	-	-	228
その他	Others	2,876	2,426	2,383	2,797	3,460
無形固定資産合計	Total Goodwill and Intangible Assets	3,874	2,794	2,383	2,797	3,689
投資その他の資産	Investments, Long-Term Receivables and Other Assets					
投資有価証券	Investment Securities	37,170	48,244	44,041	48,261	53,470
長期貸付金	Long-Term Loans	1,104	614	439	1,047	3,988
繰延税金資産	Deferred Income Taxes	1,668	2,055	2,319	3,206	3,316
その他	Other Investments	4,179	3,849	4,908	8,464	9,984
貸倒引当金	Allowance for Doubtful Receivables	(414)	(376)	(584)	(168)	(154)
投資その他の資産合計	Total Investments, Long-Term Receivables and Other Assets	43,709	54,387	51,123	60,812	70,604
固定資産合計	Total Noncurrent Assets	181,023	183,426	175,051	180,788	203,135
資産合計	Total Assets	324,888	357,141	356,048	393,695	425,050

連結貸借対照表

Consolidated Balance Sheets

百万円/ Million ¥

負債及び純資産の部	Liabilities and Net Assets	09/3	10/3	11/3	12/3	13/3
負債の部	Liabilities					
流動負債	Current Liabilities					
支払手形及び買掛金	Notes and Accounts Payable	68,373	94,229	91,255	77,904	69,601
電子記録債務	Electronically Recorded Obligations	-	-	-	29,953	25,417
短期借入金	Bank Loans	46,941	30,641	21,509	22,581	20,242
未払法人税等	Income Taxes	736	3,143	5,310	3,422	6,381
繰延税金負債	Deferred Income Taxes	662	906	1,076	768	834
役員賞与引当金	Allowance for Directors' Bonuses	210	180	190	229	260
設備支払手形	Equipment Notes Payable	1,459	354	536	2,089	2,584
その他	Others	22,777	23,960	24,663	26,806	34,705
流動負債合計	Total Current Liabilities	141,160	153,415	144,542	163,754	160,028
固定負債	Long-Term Liabilities					
社債	Corporate Bond	-	-	10,000	20,000	20,000
長期借入金	Long-Term Debt	36,115	32,586	24,454	22,421	21,715
リース債務	Lease Obligations	3,512	3,550	2,889	2,404	1,767
繰延税金負債	Deferred Income Taxes	4,267	9,419	8,118	6,845	8,277
退職給付引当金	Provision for retirement benefits	12,707	11,791	10,081	9,425	11,267
役員退職慰労引当金	Provision for directors' retirement benefits	1,815	557	682	607	588
執行役員退職慰労引当金	Provision for officers' retirement benefits	-	583	667	688	663
持分法適用に伴う負債	Liabilities from application of equity method	76	91	-	-	-
その他	Others	188	611	868	807	958
固定負債合計	Total Long-Term Liabilities	58,683	59,193	57,761	63,201	65,238
負債合計	Total Liabilities	199,843	212,608	202,303	226,956	225,266
純資産の部	Net Assets					
株主資本	Stockholders' Equity					
資本金	Common Stock	17,009	17,009	17,009	17,009	17,009
資本剰余金	Additional Paid-in Capital	17,295	17,295	17,523	17,900	19,308
利益剰余金	Retained Earnings	89,408	97,962	114,642	127,904	144,436
自己株式	Treasury Stock	(4,653)	(4,742)	(6,755)	(5,345)	(794)
株主資本合計	Total Stockholders' Equity	119,060	127,526	142,420	157,469	179,959
その他の包括利益累計額	Accumulated Other Comprehensive Income(Loss)					
その他有価証券評価差額金	Unrealized Gain or Loss on Available-for-Sale Securities	7,534	14,673	12,208	13,413	16,533
繰延ヘッジ損益	Deferred Gain or Loss on Hedges	0	(4)	(1)	-	-
為替換算調整勘定	Cumulative Translation Adjustments	(10,632)	(7,952)	(11,823)	(15,971)	(6,492)
その他の包括利益累計額合計	Total Accumulated other comprehensive income(Loss)	(3,098)	6,716	383	(2,557)	10,040
少数株主持分	Minority Interests	9,082	10,290	10,940	11,827	9,782
純資産合計	Total Net Assets	125,044	144,533	153,744	166,739	199,783
負債及び純資産合計	Total Liabilities and Net Assets	324,888	357,141	356,048	393,695	425,050

連結損益計算書

Consolidated Income Statements

百万円/ Million ¥

		09/3	10/3	11/3	12/3	13/3
売上高	Net Sales	440,908	404,143	456,198	440,752	507,985
売上原価	Cost of Sales	396,219	353,303	389,142	384,643	441,316
売上総利益	Gross Profit	44,689	50,839	67,056	56,109	66,668
販売費及び一般管理費	Selling General and Administrative Expenses	34,229	32,053	34,298	33,616	36,648
営業利益	Operating Income	10,459	18,785	32,757	22,493	30,020
営業外収益	Non-Operating Income	6,172	3,638	4,658	4,294	7,130
受取利息及び配当金	Interest Income and Dividends Income	1,242	596	914	1,599	1,424
持分法による投資利益	Investment Profit on Equity Method	1,255	882	1,481	865	336
不動産賃貸料	Real Estate Rental Income	960	909	880	833	705
屑売却代	Waste and Scrap Sale Income	1,682	42	—	—	—
その他	Others	1,031	1,207	1,381	996	4,664
営業外費用	Non-Operating Expenses	3,706	4,792	4,007	2,903	2,243
支払利息	Interest Expense	1,467	1,316	960	887	777
固定資産除却損	Loss on Disposal of Fixed Assets	466	621	475	317	272
その他	Others	1,772	2,854	2,572	1,699	4,664
経常利益	Ordinary Income	12,925	17,631	33,407	23,884	34,907
特別利益	Extraordinary Gains	230	309	192	861	877
固定資産売却益	Gains on Sales of Fixed Assets	—	130	—	99	199
投資有価証券売却益	Gains on Sales of Investments in Securities	17	22	33	523	—
その他	Others	213	156	158	238	678
特別損失	Extraordinary Losses	3,548	2,617	2,651	945	3,083
減損損失	Impairment Loss on Fixed Assets	1,624	1,058	19	350	2,309
その他	Others	1,924	1,558	2,632	595	773
税金等調整前当期純利益	Income before Taxes and Minority Interest Income	9,608	15,323	30,948	23,799	32,701
法人税等	Income Taxes	2,076	4,422	9,274	6,328	10,769
法人税等調整額	Deferred Taxes	1,886	(447)	123	(731)	211
少数株主利益	Minority Interest Income	382	1,059	2,129	1,460	1,385
当期純利益	Net Income	5,262	10,290	19,420	16,741	20,333

連結キャッシュ・フロー計算書 Consolidated Cash Flow Statements

百万円/ Million ¥

		09/3	10/3	11/3	12/3	13/3
営業活動によるキャッシュ・フロー	Operating Activities					
税金等調整前当期純利益	Net Income before Income Taxes and Minority Interests	9,608	15,323	30,948	23,799	32,701
減価償却費	Depreciation & Amortization	26,600	24,074	22,584	21,371	21,393
減損損失	Impairment Loss on Fixed Assets	1,624	1,058	19	350	2,309
退職給付引当金増減額	Increase (Decrease) in Retirement Benefits	(1,250)	(1,679)	(1,675)	(503)	175
受取利息及び受取配当金	Interest and Dividends Received	(1,242)	(596)	(914)	(1,599)	(1,424)
支払利息	Interest Expenses	1,467	1,316	960	887	777
為替差損益	Exchange Profit or Loss	(247)	493	513	304	(872)
持分法による投資利益	Investment Profit on Equity Method	(1,255)	(882)	(1,481)	(865)	(336)
有形固定資産除売却損益	(Gain) Loss on Property, Plant and Equipment	715	568	476	250	44
投資有価証券売却損益	(Gain) Loss on Sales of Short-Term Investments and Investment Securities	(17)	(14)	(33)	(503)	-
売上債権の増減額	(Increase) Decrease in Notes and Accounts Receivable	31,053	(26,519)	10,614	(25,111)	824
たな卸資産の増加額	(Increase) Decrease in Inventories	1,183	4,760	(2,038)	(1,380)	1,995
仕入債務の増減額	Increase (Decrease) in Notes and Accounts Payable	(39,913)	24,494	(3,124)	17,607	(22,843)
その他	Others	2,093	707	2,484	(2,441)	1,415
小計	Subtotal	30,419	43,107	59,333	32,167	36,162
利息及び配当金の受取額	Interest and Dividends Received in Cash	2,520	1,262	1,710	3,105	2,119
利息の支払額	Interest Paid	(1,449)	(1,306)	(955)	(871)	(795)
法人税等の支払額又は還付額(支払額)	Income taxes (paid) refund	(8,850)	(255)	(7,032)	(8,338)	(8,263)
営業活動によるキャッシュ・フロー	Net Cash Provided by (Used In) Operating Activities	22,639	42,807	53,056	26,063	29,222

連結キャッシュ・フロー計算書 Consolidated Cash Flow Statements

百万円/ Million ¥

		09/3	10/3	11/3	12/3	13/3
投資活動によるキャッシュ・フロー	Investing Activities					
定期預金の増減額	(Increase) Decrease in Time Deposits	(124)	107	327	(99)	336
有形固定資産の取得による支出	Capital Expenditures	(28,659)	(16,321)	(18,616)	(19,164)	(23,461)
有形固定資産の売却による収入	Proceeds from Sales of Property, Plant and Equipment	462	195	152	774	579
無形固定資産の増減額	(Increase) Decrease in Intangible Fixed Assets	(1,366)	(524)	(719)	(944)	(1,082)
投資有価証券の増減額	(Increase) Decrease in Investments in Securities	(31)	(857)	(46)	(8,174)	(2,561)
貸付金の増減額	(Increase) Decrease in Loans Receivable	839	(530)	266	(195)	(2,984)
その他	Others	(423)	153	(1,390)	673	45
投資活動によるキャッシュ・フロー	Net Cash Used in Investing Activities	(29,303)	(17,777)	(20,025)	(27,130)	(29,129)
財務活動によるキャッシュ・フロー	Financing Activities					
短期借入金の増減額	Increase (Decrease) in Short-Term Debt	9,877	(12,366)	(6,001)	920	(4,538)
長期借入金の増減額	Increase (Decrease) in Long-Term Debt	10,923	(7,637)	(10,241)	(2,064)	(3,807)
社債・CPの発行による収入	Proceeds from issuance of corporate bond and commercial papers	3,000	9,000	22,000	25,000	28,000
社債・CPの償還による支出	Redemption of corporate bond and commercial papers	—	(9,000)	(12,000)	(12,000)	(24,000)
自己株式取得による支出	Treasury Stock	(3,855)	(91)	(2,661)	(9)	(1)
リース債務の返済による支出	Repayment of lease obligation	(481)	(555)	(820)	(642)	(1,581)
配当金の支払額	Dividends Paid	(3,355)	(1,670)	(3,297)	(3,527)	(3,832)
少数株主への配当金の支払額	Dividends Paid to Minority Interests	(206)	(150)	(186)	(298)	(701)
その他	Others	(94)	6	(122)	1,967	151
財務活動によるキャッシュ・フロー	Net Cash Provided by (Used In) Financing Activities	15,806	(22,465)	(13,330)	9,347	(10,311)
現金及び現金同等物に係る換算差額	Effect of Exchange Rate Changes on Cash and Equivalents	(3,353)	549	(2,256)	(1,861)	4,153
現金及び現金同等物の増減額	Net Increase (Decrease) in Cash and Cash Equivalents	5,788	3,113	17,442	6,418	(6,064)
現金及び現金同等物の期首残高	Cash and Cash Equivalents at Beginning of Year	26,394	32,253	35,379	52,934	58,773
新規連結による現金及び現金同等物増加額	Increase in Cash and Cash Equivalents Accompanying Consolidation	—	99	—	—	4,300
連結子会社と非連結子会社との合併に伴う現金及び現金同等物の増加額	Increase in cash and cash equivalents resulting from merger of subsidiaries and merger with unconsolidated subsidiaries	69	—	—	—	—
連結子会社の決算期変更に伴う現金及び現金同等物の増減額	Increase (Decrease) in cash and cash equivalents resulting from changes in fiscal year end of consolidated subsidiaries	—	(86)	112	(579)	—
現金及び現金同等物の期末残高	Cash and Cash Equivalents at End of Year	32,253	35,379	52,934	58,773	57,009